

OVERHEAD CRANE, SAFETY & MAINTENANCE TRAINING

2020 KONECRANES TRAINING INSTITUTE



cranetrainingu.com | konecranesUSA.com | konecranes.ca

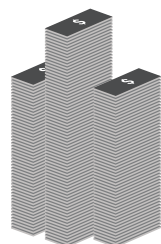
KONECRANES®

OVERHEAD CRANE INCIDENTS

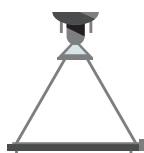
IMPACT AND PREVENTION

Experts from the Konecranes Training Institute analyzed 249 OSHA reported crane incidents that occurred over a period of a decade in the U.S. – that's over two per month. Learn the costs, injuries, occupations of the injured, top causes of these incidents and, most importantly, ways to reduce the likelihood of accidents and injuries involving overhead cranes.

INCIDENTS INVOLVED
838 OSHA VIOLATIONS
 133 INJURIES & 133 FATALITIES



OVER
\$2.3 MILLION
 IN OSHA FINES



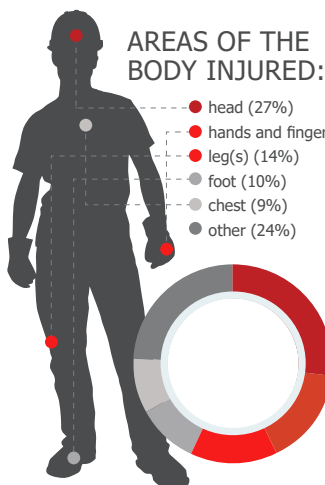
DIRECT COSTS



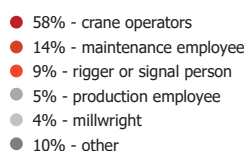
INDIRECT COSTS



TOP CAUSES & RESULTS OF THE INCIDENTS



OCCUPATION OF THOSE INJURED OR WITH FATALITIES



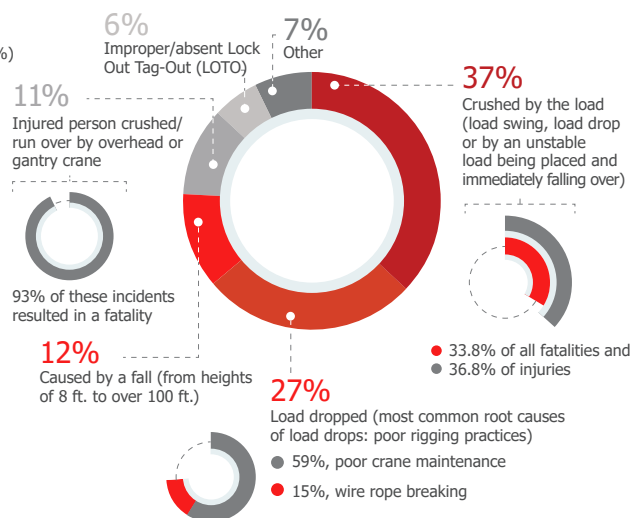
ESTIMATED ECONOMIC IMPACT:

OVER
\$500 MILLION



AVERAGE MAJOR INJURY HAS A COST OF OVER:
\$200,000

AVERAGE FATALITY HAS A COST OF OVER:
\$4 MILLION



70% OF THE INCIDENTS MAY HAVE BEEN PREVENTED BY PROPER TRAINING

PREVENTION WAS POSSIBLE

74% OF INCIDENTS HAPPENED DURING ROUTINE JOB ACTIVITIES
 9% OF INCIDENTS MAY HAVE BEEN PREVENTED WITH PROPER CRANE MAINTENANCE

Source: This data is the result of a 2011 study completed by the Konecranes Training Institute in New Berlin, WI. Data was obtained from the U.S. Department of Labor, Occupational Safety & Health Administration. The study analyzed 249 industrial overhead crane incidents that occurred over a 10-year period. The study and the information presented is an analysis and summary of the obtained data and does not take into account the identity of, or attribute liability to, any parties involved in the incidents and in no way states, concludes or infers that Konecranes was involved in any respect in such incidents.

Dates and Prices are subject to change. Visit www.cranetrainingu.com for updates.

TABLE OF CONTENTS

INTRODUCTION

Training Requirements & Registration	3
On-Site Courses	4
Program Benefits	5
Registration Steps	6

TRAINING SCHEDULES

KTI Milwaukee	7
Regional Seminar Courses	9
U.S. Training Centers - Northeast	10
U.S. Training Centers - Southern	11
U.S. Training Centers - Western	12
U.S. Training Centers - Midwest	13
Canada Training Centers	14

CRANE OPERATOR

#700 - Overhead Crane Operator	16
#808A, #808C, #808R - Overhead Crane Operator	17
#808T - Overhead Crane Operator & Rigging T-T-T	18
#808TR, #808TRA - Overhead Crane Operator & Rigging T-T-T, Refresher	19
#812 - Bucket/Grapple Crane Operator	20
#SmOP - Smarton Operator	20
#800, #800W - R1 Rigging Fundamentals, Inspections & Signals	21
#800A - R2 Advanced Rigging & Rigging Inspection	21
#800T - R3 Rigging Fundamentals, Inspections & Signals Train-the-Trainer	22
Rigging Seminar Dates	23
Webinar Courses	25

CRANE MANAGEMENT

#880, #880W - Crane Regulations & Risk Management	26
---	----

CRANE MAINTENANCE AND INSPECTION

#818, #819, #819R, #819W - Overhead Crane Inspection	27
#820, #820SP, #820W - Overhead Crane Inspection Refresher	28

#819M, #819MW - Frequent Crane Inspections	30
#811, #809 - Overhead Crane Mechanical Maintenance	31
#805, #807A - Overhead Crane Electrical Maintenance	32
#816 - Underhung Crane Maintenance	33
#817 - Underhung Crane Inspection	33

CRANE CONTROL

#864 - Konecranes VFD Crane Control	34
#852 - D.C. Crane Control	34
#841, #841CERT - Static Stepless Setup & Troubleshooting	36
#827 - Impulse Series VFD Controls	36

MOBILE CRANES

#828, #829 - Mobile Crane Operator Safety & Inspection	37
#828T - Mobile Crane Operator Train-the-Trainer	37
#828-CCO, #828-CIC - Mobile Crane Operator, Certification, Training & Testing	38
#828U - Utility Truck Crane Operator Safety	38

PORTAL CRANES

#838 - Portal Crane Operator Training	39
#839 - Portal Crane Mechanical Maintenance	39

SAFETY TRAINING

#920T - Fork Lift Operator Train-the-Trainer	41
#IPAF - Mobile Elevated Work Platforms Operator Training	42
#MEWP - Mobile Elevated Work Platforms for Managers, E-Learning	42
#FP8 - Fall Protection Authorized Person	43
#FP24 - Fall Protection Competent Person	44

COURSE REGISTRATION

Registration Form	46
-------------------------	----

COPYRIGHTED MATERIALS

All Institute materials are copyrighted publications of Konecranes. Reproduction in whole or in part without written permission from Konecranes is expressly prohibited. Videotaping and/or recording of training is expressly prohibited.



TRAINING REQUIREMENTS AND RECOMMENDATIONS

OPERATOR TRAINING

ASME B30.2 – 2016 clearly states that Operator Training is required. To sum up OSHA 1910.179 and ASME B30.2-2016 requirements cranes shall be operated only by personnel who:

- Have been trained and evaluated by a competent instructor.
- Are able to explain and apply all recommended safety and operating procedures.
- Know proper hand signals.
- Are able to correctly make precision lifts.
- Some states/provinces have more specific requirements
- (Michigan OSHA Part 18 requires all operators be licensed by the employer.)

Further it is the responsibility of Management to issue a certificate or formal record that verifies that the person has been trained and has passed the examinations required.

THE KONECRANES TRAINING INSTITUTE'S RECOMMENDATIONS FOR CRANE OPERATORS:

- OH Crane Operator Training Course No. 700 or 808A or C
- Hands-on Experience
- Practical Evaluation on the crane the student will be using.
- Be provided refresher training with evaluation every two years.

CRANE INSPECTION PERSONNEL

Crane inspection personnel are required to be designated by the employer.

Some States/Provinces have more stringent requirements. (Calif.) The Konecranes Training Institute's recommendation is that Crane Inspectors have:

- Hands-on experience working with cranes.
- Crane Inspection Course No. 818 or 819 with written evaluation.
- Pass a practical Evaluation.
- Have the ability and means to present findings.
- Refresher training with evaluation every two years (Course No. 820).

CRANE MAINTENANCE TRAINING

The new ASME B30.2-2016 specification clearly spells out that training for maintenance personnel including Electrical, Mechanical and Structural is required. To sum up OSHA 1910.179 and ASME B30.2-2016 training requirements, personnel must be competent and trained to perform maintenance on your cranes and hoists.

- Hands-on experience working with cranes.

The Konecranes Training Institute's recommendation: Maintenance personnel as a minimum receive training, which includes:

- Trade skills - Basic Electricity or Basic Mechanical
- Overhead Crane Maintenance Courses
- Overhead Crane Mechanical Maintenance Course (#809 or #811) for Mechanics.
- Training on the specific crane control system.
- Refresher and advanced skill training
- If maintenance personnel are going to need to operate cranes – Operator training should be provided.

GENERAL INFORMATION

Training is applicable to all brands of cranes and hoists. For on-site training, students should be familiar with the bulletin number(s) and equipment serial numbers which apply to their facility's particular crane control system. These numbers help Institute instructors locate specific schematics for a customer's crane.

Students are asked to bring their crane drawings or manuals to class, if they have any specific questions to address.

PRE-REQUISITES

Participants must have knowledge of either basic mechanical or electrical terminology. Practical experience with equipment maintenance and diagnostic equipment is also recommended.

TRAINING RECORDS

Employers should keep written records on all training provided to employees. If you need a transcript of past courses for your employees, please contact the Konecranes Training Institute.

PARTIAL LIST OF REGULATORY ORGANIZATIONS

- OSHA 1910.179
- ASME B30.2 and others
- State/Provincial Regulations
- MSHA – Mining
- US Coast Guard/Maritime
- Canadian/Provincial Regulations
- CMAA
- HMI
- NCCCO
- NEC
- OSHA 1926.1400



ON-SITE COURSES

CALL FOR PRICING

Each year hundreds of company locations take advantage of on-site courses at their facilities. This cost effective approach saves your personnel the expense of traveling to one of our seminars.

We can offer our standard courses or customize a class to meet your specific requirements, student skill levels and schedule. Testing and certification are available including practical exams. Daily start and end times can be adjusted to limit the interruption in your schedule.

Pricing depends on a number of factors. All courses can be offered on-site. Our most popular courses are:

- Mobile Crane Operator
- Overhead Crane Inspection
- Operator Training
- Operator Train-The-Trainer
- Mechanical Maintenance
- Electrical Maintenance
- Bucket Crane Operator
- VFD Controls - Smartorque Control

All of our courses can be held at your location. Hands-on training can be included at your site, on your equipment.

To request training for your team, contact your local representative, or contact us at 866.821.4006.

ON-SITE TRAINING CUSTOMERS

AUTOMOTIVE

FCA Group
Ford
General Motors
Goodyear
Harley Davidson
Honda
Mitsubishi
Nissan
Toyota

METALS PRODUCTION

AK Steel
Alcan
Alcoa
Arcelor Mittal Steel
Arconic
Charter Steel
Evraz Steel
Gerdau
Keystone Steel & Wire
Kloekner Metals
Novelis
Nucor Steel
O'Neal Steel
Steel Dynamics
Teck Metals
Thyssen Krupp
US Steel

CEMENT

Buzzi Unicem
Essrock Cement
Lafarge
Lehigh Hanson
Lone Star Cement

PETROLEUM & GAS

Citgo
Conoco Phillips
Exxon Mobil
Kinder Morgan
Marathon Petroleum
Savage
Shell
Total

MINING

Asarco
Cleveland Cliffs
Freeport McMoRan
North Shore Mining
Rio Tinto
US Steel
Vale
Vulcan
Xstrata

PAPER AND FOREST

Clearwater Paper
Domtar
Georgia Pacific
International Paper
Kimberly Clark
New Page
Potlatch
Sierra Pacific
Verso
WestRock
Weyerhaeuser

WASTE TO ENERGY & BIOMASS COMPANIES

Alabama Power
American Electric Power
Covanta Energy
Dominion Generation
Duke Energy
Entergy
Exelon
GE Oil and Gas
NRG
Pacific Gas & Electric
Suncor
TransCanada
Wheelabrator

GOVERNMENT/DEFENSE

Argonne National Labs
BAE Systems
Fermi Labs
General Dynamics
Los Alamos Labs
Lockheed Martin
New York Power Authority
Northrop Grumman
Pratt Whitney

MANUFACTURING

Boeing
Caterpillar
Cummins
General Electric
Godwin Pumps - ITT
Johnson Controls
Joy Global
Lockheed Martin
National Oilwell - Varco
Pratt and Whitney
Siemens
Whirlpool



WE TRAIN SIX WAYS

- 1 Konecranes Training Institute in Milwaukee:** Students benefit from access to our 7,500 sq. ft. hands-on lab located in the Milwaukee area.
- 2 Regional Training Centers:** We offer 10 to 25 courses at our Regional Training Centers each year. These centers are located in Houston, Los Angeles, Mobile, Philadelphia, Phoenix, Pittsburgh, Springfield (OH) & Toronto.
- 3 Regional Seminars:** Scheduled in 40 cities per year reducing expenses and travel time.
- 4 On-Site Courses:** Eliminate additional travel expenses and let us do a standard course at your site or customize a course to meet your needs.
- 5 On-Line Training:** Self-paced, on-Line courses are available. Our Overhead Crane Inspection Refresher course takes 3 to 5 hours and includes a mid-term and final exam.
- 6 Webinars:** Receive instructor led training without having to travel. This online option offers the same quality training as an on-site course, in real-time.

- Our training is up-to-date on all the latest federal and state regulations. Your personnel will learn how to meet and exceed OSHA and ASME B30 requirements.
- Our training uses proven best practices for crane operation and maintenance.
- We offer over 30 different courses in crane inspection, electrical and mechanical maintenance and operator training.
- We utilize professionally prepared copyrighted course workbooks, pamphlets and materials. Your course workbook will continue to serve as a valuable reference.
- Our courses utilize the latest instruction methods.
- Over 98% of Konecranes Training Institute students surveyed indicate that our training met or exceeded expectations.
- Your personnel will be trained using the same courses and expert instructors that we use to train our own crane technicians.
- Students will benefit from networking with other industry professionals.
- We offer testing and hands-on training.
- Continuing support is included. Simply call us if you have any questions after the class.

HANDS-ON TRAINING LAB

One of the best features of coming to our training courses in the Milwaukee area is our new 7,500 square foot teaching lab. This space has been designed with our students in mind. Hands-on training reinforces our classroom discussions and allows the direct application of what was just reviewed.

LAB EQUIPMENT INCLUDES:

- VFD Crane Control with hoist tower along with Suitcase Controllers
- P&H Static Stepless Crane Control System for both Hoists and Traverse applications.
- Five Step control wound rotor control systems with hoist tower.
- Radio Controls
- 5 ton CXT crane with smart features
- Brakes Area with Mechanical Load Brake, Electric Load Brake, Caliper Disc Brake, SBE Shoe Brake, DC Rectified Disc Brakes, & Brake Wheels
- Rigging Area with multiple rigging equipment.
 - Rigging Angle simulator for viewing forces depending on the angle.
 - Examples of bad rigging equipment
- Mechanical Maintenance Area:
 - Wheels
 - Runway Rail wear samples
 - Gear boxes, gears & pinions
 - Sheaves & Wire Rope
 - Hooks and hook latches – including our hook latch trigger.
- Electrical Maintenance Area:
 - Contactor Controls
 - Limit Switches
 - Festoon Systems & trolleys
 - Conductor Bar Systems & Collectors
 - Reactors
 - Pendant Systems
- Wire Rope and Chain Hoists:
 - Konecranes CXT Hoists
 - Stahl Brand Wire Rope Hoist
 - Shepard Niles Brand Hoist
 - Morris UK Hoist
 - P&H Hevi-Lift Hoists
 - Konecranes CLX Chain Hoists
 - CM Chain Hoist
 - Konecranes Air Balancer Hoist
- Overhead Crane Models



Hands-On Training

Hands-On students should bring their own PPE to use during the class (items such as: steel toe shoes, hard hats and safety glasses). For information about what PPE is needed, contact the Konecranes Training Institute.



HOW TO REGISTER

Five easy ways to register for Institute courses:

1. **ONLINE:** www.cranetrainingU.com
2. **PHONE:** 866.821.4006
3. **E-MAIL:** institute@konecranes.com
4. **LOCAL:** Contact your local Konecranes branch
5. **MAIL to:** Konecranes Training Institute,
5306 S. Emmer Drive, New Berlin, WI 53151

For technical questions, or for the location of the nearest regional office, call the Konecranes Training Institute at 866.821.4006.

WHEN TO REGISTER

Register anytime! However, it is strongly recommended that you register two months prior to the class start date to ensure enrollment on the preferred date.

Early-bird specials: Look for email communications to take advantage of special rates for early registration.

Class size is limited to ensure the best learning experience. If there is sufficient demand, extra course sessions may be arranged. All registrations are subject to confirmation. Confirmation letters containing logistical information will be mailed, faxed or e-mailed to enrolled participants before the class start date.

COURSE FEES

Milwaukee and Regional course fees include all course materials and lunches. All regularly scheduled course tuition prices include all course materials including student workbook and lunches. For on-site courses, contact us for pricing information. Pricing for on-site courses is based on location, number of students, course description and the length of the course.

PAYMENT

All payments should be made and sent to:
Konecranes, Inc.,
PO Box 641807, Pittsburgh, PA 15264-1807

Konecranes Inc. reserves the right to screen out competing vendors from any Institute classes.

CANCELLATION POLICY

MILWAUKEE CLASSES AND SEMINARS

Hopefully you won't need to cancel, but if you do, please do so in writing at least one week prior to the course for a full refund. Or, if you'd like, apply your fee to a future class. There is \$225 charge on late cancellations and no refunds are made on uncanceled registrations.

The Konecranes Training Institute reserves the right to cancel any scheduled course. Fees will be refunded or applied to a future course.

ON-SITE CLASSES

Cancellations or rescheduling occurring less than 25 days prior to the course start date are subject to a charge of 25% of the total training cost plus airfare charges. Cancellations occurring less than seven days from start of on-site course are subject to 80% of the training cost.



cranetrainingu.com

- Register for classes
- Find the most up-to-date course schedule
- See class photos
- Read important articles
- Buy Konecranes gear and gifts

See our On-Line Store at
www.cranetrainingu.com
which has OSHA, ASME B30 and
CMAA Specifications available in
a convenient bundle!

KONECRANES TRAINING INSTITUTE MILWAUKEE SCHEDULE

Jan 7	#800	R1 Rigging Fundamentals, Inspections & Signals	Mar 31	#800	R1 Rigging Fundamentals, Inspections & Signals
Jan 7-8	#800A	R2 Advanced Rigging & Rigging Inspection	Mar 31-Apr 1	#800A	R2 Advanced Rigging & Rigging Inspection
Jan 7-9	#800T	R3 Rigging T-T-T	Mar 31-Apr 2	#800T	R3 Rigging T-T-T
Jan 7-9	#805	Overhead Crane Electrical Maintenance	Mar 31-Apr 2	#827	Impulse Series VFD Controls
Jan 10	#700	Overhead Crane Operator	Apr 6	#820	Overhead Crane Inspection Refresher
Jan 14-16	#808T	Overhead Crane Operator & Rigging	Apr 7-9	#808T	Overhead Crane Operator & Rigging
Jan 14-16	#808TR	Overhead Crane Operator & Rigging T-T-T	Apr 7-9	#808TR	Overhead Crane Operator & Rigging T-T-T
Jan 14-17	#811	Overhead Crane Mechanical Maintenance (Hands-On)	Apr 9	#700	Overhead Crane Operator
Jan 17	#808A	Overhead Crane Operator Floor Crane & Rigging	Apr 14-16	#805	Overhead Crane Electrical Maintenance
Jan 21-23	#864	Konecranes VFD Crane Control	Apr 14-17	#818	Overhead Crane Inspection
Jan 21-24	#818	Overhead Crane Inspection	Apr 21-24	#811	Overhead Crane Mechanical Maintenance (Hands-On)
Jan 27-31	#841	Static Stepless Setup & Troubleshooting	Apr 21-24	IPAF	International Powered Access Federation
Jan 28-30	FP24	Fall Protection Competent Person	Apr 27-May 1	#841	Static Stepless Setup & Troubleshooting
Jan 31	FP8	Fall Protection Authorized Person	Apr 28-29	#828	Mobile Crane Operator Safety & Inspection
Feb 4	#800	R1 Rigging Fundamentals, Inspections & Signals	Apr 30-May 1	#829	Mobile Crane Operator Safety & Inspection
Feb 4-5	#800A	R2 Advanced Rigging & Rigging Inspection	May 5	#800	R1 Rigging Fundamentals, Inspections & Signals
Feb 4-6	#800T	R3 Rigging T-T-T	May 5-6	#800A	R2 Advanced Rigging & Rigging Inspection
Feb 4-6	#805	Overhead Crane Electrical Maintenance	May 5-7	#800T	R3 Rigging T-T-T
Feb 11-13	#808T	Overhead Crane Operator & Rigging	May 5-7	#805	Overhead Crane Electrical Maintenance
Feb 11-13	#808TR	Overhead Crane Operator & Rigging T-T-T	May 8	#700	Overhead Crane Operator
Feb 11-13	#852	D.C. Crane Control	May 12-14	#808T	Overhead Crane Operator & Rigging
Feb 14	#808A	Overhead Crane Operator Floor Crane & Rigging	May 12-14	#808TR	Overhead Crane Operator & Rigging T-T-T
Feb 18	#880	Crane Regulations and Risk Management	May 12-15	#811	Overhead Crane Mechanical Maintenance (Hands-On)
Feb 18-21	#818	Overhead Crane Inspection	May 15	#808A	Overhead Crane Operator Floor Crane & Rigging
Feb 21	#700	Overhead Crane Operator	May 19-21	#828T	Mobile Crane Operator Safety & Inspection T-T-T
Feb 25-26	SmOP	Smarton Operator Training	May 19-22	#818	Overhead Crane Inspection
Feb 25-28	#811	Overhead Crane Mechanical Maintenance (Hands-On)	May 27	#880	Crane Regulations and Risk Management
Feb 27	#819M	Frequent Crane Inspections	May 28	#819M	Frequent Crane Inspections
Feb 28	#820	Overhead Crane Inspection Refresher	May 29	#820	Overhead Crane Inspection Refresher
Mar 2-3	#817	Underhung Crane Inspection Training	Jun 2	#800	R1 Rigging Fundamentals, Inspections & Signals
Mar 3	#800	R1 Rigging Fundamentals, Inspections & Signals	Jun 2-3	#800A	R2 Advanced Rigging & Rigging Inspection
Mar 3-4	#800A	R2 Advanced Rigging & Rigging Inspection	Jun 2-4	#800T	R3 Rigging T-T-T
Mar 3-5	#800T	R3 Rigging T-T-T	Jun 2-4	#805	Overhead Crane Electrical Maintenance
Mar 4-6	#816	Underhung Crane Maintenance	Jun 5	#700	Overhead Crane Operator
Mar 10-11	#807A	Overhead Crane Electrical Maintenance	Jun 9-10	SmOP	Smarton Operator Training
Mar 10-12	#808T	Overhead Crane Operator & Rigging	Jun 9-12	#811	Overhead Crane Mechanical Maintenance (Hands-On)
Mar 10-12	#808TR	Overhead Crane Operator & Rigging T-T-T	Jun 16-18	#819	Overhead Crane Inspection
Mar 12-13	#809	Overhead Crane Mechanical Maintenance	Jun 16-18	#819R	Overhead Crane Inspection (Refresher)
Mar 13	#808A	Overhead Crane Operator Floor Crane & Rigging	Jun 16-18	#808T	Overhead Crane Operator & Rigging
Mar 17-19	#805	Overhead Crane Electrical Maintenance	Jun 16-18	#808TR	Overhead Crane Operator & Rigging T-T-T
Mar 17-19	#819	Overhead Crane Inspection	Jun 16-18	#808A	Overhead Crane Operator Floor Crane & Rigging
Mar 17-19	#819R	Overhead Crane Inspection (Refresher)	Jun 19	#807A	Overhead Crane Electrical Maintenance
Mar 24-27	#811	Overhead Crane Mechanical Maintenance (Hands-On)	Jun 23-24*	#807A	Overhead Crane Electrical Maintenance
			Jun 23-26*	IPAF	International Powered Access Federation

Jun 25-26*	#809	Overhead Crane Mechanical Maintenance	Sep 29-Oct 1	#827	Impulse Series VFD Controls
Jul 7*	#800	R1 Rigging Fundamentals, Inspections & Signals	Sep 29-Oct 1	#828T	Mobile Crane Operator Safety & Inspection T-T-T
July 7-8*	#800A	R2 Advanced Rigging & Rigging Inspection	Oct 6	#805	Overhead Crane Electrical Maintenance
July 7-9*	#800T	R3 Rigging T-T-T	Oct 6	#800	R1 Rigging Fundamentals, Inspections & Signals
Jul 7-10*	#811	Overhead Crane Mechanical Maintenance (Hands-On)	Oct 6-7	#800A	R2 Advanced Rigging & Rigging Inspection
Jul 13-14*	#817	Underhung Crane Inspection Training	Oct 6-8	#800T	R3 Rigging T-T-T
Jul 14-16*	#808T	Overhead Crane Operator & Rigging	Oct 13-15	#808T	Overhead Crane Operator & Rigging
Jul 14-16*	#808TR	Overhead Crane Operator & Rigging T-T-T	Oct 13-15	#808TR	Overhead Crane Operator & Rigging T-T-T
Jul 15-17*	#816	Underhung Crane Maintenance	Oct 13-16	IPAF	International Powered Access Federation
Jul 17*	#808A	Overhead Crane Operator Floor Crane & Rigging	Oct 16	#808A	Overhead Crane Operator Floor Crane & Rigging
Jul 21-22	#828	Mobile Crane Operator Safety & Inspection	Oct 20-22	#864	Konecranes VFD Crane Control
Jul 21-24	#818	Overhead Crane Inspection	Oct 20-23	#818	Overhead Crane Inspection
Jul 23-24	#829	Mobile Crane Operator Safety & Inspection	Oct 27-28	#807A	Overhead Crane Electrical Maintenance
Jul 28-30	#864	Konecranes VFD Crane Control	Oct 27-29	#852	D.C. Crane Control
Aug 4*	#800	R1 Rigging Fundamentals, Inspections & Signals	Oct 29-30	#809	Overhead Crane Mechanical Maintenance
Aug 4-5*	#800A	R2 Advanced Rigging & Rigging Inspection	Nov 3	#800	R1 Rigging Fundamentals, Inspections & Signals
Aug 4-6*	#800T	R3 Rigging T-T-T	Nov 3-4	#800A	R2 Advanced Rigging & Rigging Inspection
Aug 7*	#819M	Frequent Crane Inspections	Nov 3-5	#800T	R3 Rigging T-T-T
Aug 11-13*	#808T	Overhead Crane Operator & Rigging	Nov 3-6	#811	Overhead Crane Mechanical Maintenance (Hands-On)
Aug 11-13*	#808TR	Overhead Crane Operator & Rigging T-T-T	Nov 6	#700	Overhead Crane Operator
Aug 11-14*	#811	Overhead Crane Mechanical Maintenance (Hands-On)	Nov 9-13	#841	Static Stepless Setup & Troubleshooting
Aug 14*	#808A	Overhead Crane Operator Floor Crane & Rigging	Nov 10-12	#808T	Overhead Crane Operator & Rigging
Aug 18-21	IPAF	International Powered Access Federation	Nov 10-12	#808TR	Overhead Crane Operator & Rigging T-T-T
Aug 18-21	#811	Overhead Crane Mechanical Maintenance (Hands-On)	Nov 13	#808A	Overhead Crane Operator Floor Crane & Rigging
Aug 24-28	#841	Static Stepless Setup & Troubleshooting	Nov 17-19	#827	Impulse Series VFD Controls
Aug 25-26	#807A	Overhead Crane Electrical Maintenance	Nov 17-20	#818	Overhead Crane Inspection
Aug 27-28	#809	Overhead Crane Mechanical Maintenance	Nov 23	#819M	Frequent Crane Inspections
Aug 31-Sep 1	#817	Underhung Crane Inspection Training	Nov 24	#820	Overhead Crane Inspection Refresher
Sep 1	#800	R1 Rigging Fundamentals, Inspections & Signals	Nov 25	#880	Crane Regulations and Risk Management
Sep 1-2	#800A	R2 Advanced Rigging & Rigging Inspection	Dec 1	#800	R1 Rigging Fundamentals, Inspections & Signals
Sep 1-3	#800T	R3 Rigging T-T-T	Dec 1-2	#800A	R2 Advanced Rigging & Rigging Inspection
Sep 2-4	#816	Underhung Crane Maintenance	Dec 1-3	#800T	R3 Rigging T-T-T
Sep 9-11	#819	Overhead Crane Inspection	Dec 1-4	#811	Overhead Crane Mechanical Maintenance (Hands-On)
Sep 9-11	#819R	Overhead Crane Inspection (Refresher)	Dec 8-10	#805	Overhead Crane Electrical Maintenance
Sep 11	#700	Overhead Crane Operator	Dec 8-10	#808T	Overhead Crane Operator & Rigging
Sep 15-18	#811	Overhead Crane Mechanical Maintenance (Hands-On)	Dec 8-10	#808TR	Overhead Crane Operator & Rigging T-T-T
Sep 22	#880	Crane Regulations and Risk Management	Dec 11	#808A	Overhead Crane Operator Floor Crane & Rigging
Sep 22-24	#808T	Overhead Crane Operator & Rigging	Dec 14-15	SmOP	Smarton Operator Training
Sep 22-24	#808TR	Overhead Crane Operator & Rigging T-T-T	Dec 15-17	#819	Overhead Crane Inspection
Sep 23-24	SmOP	Smarton Operator Training	Dec 15-17	#819R	Overhead Crane Inspection (Refresher)
Sep 25	#808A	Overhead Crane Operator Floor Crane & Rigging	Dec 18	#700	Overhead Crane Operator
Sep 25	#820	Overhead Crane Inspection Refresher			

*Large tourism events expected in the Milwaukee area during this date range, please plan your travel arrangements accordingly.

REGIONAL SEMINAR COURSES

LOCATION	#819 Overhead Crane Inspection #819R Overhead Crane Inspection (Refresher)
Indianapolis, IN	Jan 7-9
Dallas, TX	Jan 21-23
Jacksonville, FL	Jan 28-30
New York, NY	Feb 4-6
New Orleans, LA	Feb 4-6
Memphis, TN	Mar 3-5
Sacramento, CA	Mar 17-19
Baltimore, MD	Mar 24-26
Charleston, SC	Mar 31-Apr 2
Birmingham, AL	Apr 14-16
Omaha, NE	Apr 21-23
Seattle, WA	Apr 28-30
Chattanooga, TN	May 5-7
Minneapolis, MN	May 12-14
Las Vegas, NV	May 27-29
Denver, CO	Jun 16-18
Lexington, KY	Jun 16-18
Vancouver, WA	Jul 7-9
Syracuse, NY	Jul 21-23
Longview, TX	Jul 28-30
Vancouver, BC	Jul 28-30
Boston, MA	Aug 4-6
Youngstown, OH	Aug 4-6
Portland, OR	Aug 18-20
St. Louis, MO	Aug 25-27
Atlanta, GA	Sep 22-24
Reno, NV	Sep 29-Oct 1
Shreveport, LA	Oct 6-8
Cincinnati, OH	Nov 3-5
Sudbury, ON	Nov 23-25
Miami, FL	Dec 1-3
Oklahoma City, OK	Dec 1-3
Kansas City, MO	Dec 8-10

LOCATION	#800 R1 Rigging Fundamentals, Inspections & Signals
Denver, CO	Feb 18
Baltimore, MD	Jul 14
Nashville, TN	Jun 2
Baltimore, MD	Jul 14
Chicago, IL	Sep 29
New York, NY	Oct 13

LOCATION	#800A R2 Advanced Rigging & Rigging Inspection
Denver, CO	Feb 18-19
Baltimore, MD	Jul 14-15
Nashville, TN	Jun 2-3
Baltimore, MD	Jul 14-15
Chicago, IL	Sep 29-30
New York, NY	Oct 13-14

LOCATION	#800T R3 Rigging Train-the-Trainer
Denver, CO	Feb 18-20
Baltimore, MD	July 14-16
Nashville, TN	Jun 2-4
Baltimore, MD	July 14-16
Chicago, IL	Sep 29-Oct 1
New York, NY	Oct 13-15

LOCATION	#FP8 Fall Protection Authorized Person
Denver, CO	Feb 21
Baltimore, MD	July 17
Nashville, TN	June 5
Baltimore, MD	July 17
Chicago, IL	October 2
New York, NY	October 16

See Pages 10-14 for Additional
Training Locations

HARTFORD, CONNECTICUT

DATES	CLASS	DESCRIPTION
Jan 7	800	R1 Rigging Fundamentals, Inspections & Signals
Jan 7-8	800A	R2 Advanced Rigging & Rigging Inspection
Jan 7-9	800T	R3 Rigging T-T-T
Feb 4-6	808T/808TR	Overhead Crane Operator & Rigging T-T-T
Mar 3-5	819/819R	Overhead Crane Inspection
Mar 31	800	R1 Rigging Fundamentals, Inspections & Signals
Mar 31-Apr1	800A	R2 Advanced Rigging & Rigging Inspection
Mar 31-Apr2	800T	R3 Rigging T-T-T
Jun 2-4	808T/808TR	Overhead Crane Operator & Rigging T-T-T
Jul 7-9	819/819R	Overhead Crane Inspection
Aug 4-5	828	Mobile Crane Operator Safety & Inspection
Aug 6-7	829	Mobile Crane Operator Safety & Inspection
Sep 1	800	R1 Rigging Fundamentals, Inspections & Signals
Sep 1-2	800A	R2 Advanced Rigging & Rigging Inspection
Sep 1-3	800T	R3 Rigging T-T-T
Oct 6-8	808T/808TR	Overhead Crane Operator & Rigging T-T-T
Nov 3-5	819/819R	Overhead Crane Inspection
Dec 1-3	805	Overhead Crane Electrical Maintenance

**PHILADELPHIA, PENNSYLVANIA**

DATES	CLASS	DESCRIPTION
Jan 14-16	808T/808TR	Overhead Crane Operator & Rigging T-T-T
Feb 11-13	819/819R	Overhead Crane Inspection
Mar 10-11	828	Mobile Crane Operator Safety & Inspection
Mar 12-13	829	Mobile Crane Operator Safety & Inspection
Apr 7	800	R1 Rigging Fundamentals, Inspections & Signals
Apr 7-8	800A	R2 Advanced Rigging & Rigging Inspection
Apr 7-9	800T	R3 Rigging T-T-T
May 12-14	808T/808TR	Overhead Crane Operator & Rigging T-T-T
Jun 9-11	819/819R	Overhead Crane Inspection
Jul 14-17	IPAF	International Powered Access Federation
Aug 11	800	R1 Rigging Fundamentals, Inspections & Signals
Aug 11-12	800A	R2 Advanced Rigging & Rigging Inspection
Aug 11-13	800T	R3 Rigging T-T-T
Sep 15-16	828	Mobile Crane Operator Safety & Inspection
Sep 17-18	829	Mobile Crane Operator Safety & Inspection
Oct 13-15	819/819R	Overhead Crane Inspection
Nov 10-12	808T/808TR	Overhead Crane Operator & Rigging T-T-T
Dec 8	800	R1 Rigging Fundamentals, Inspections & Signals
Dec 8-9	800A	R2 Advanced Rigging & Rigging Inspection
Dec 8-10	800T	R3 Rigging T-T-T

PITTSBURGH, PENNSYLVANIA

DATES	CLASS	DESCRIPTION
Jan 28-30	819/819R	Overhead Crane Inspection
Feb 25-26	807A	Overhead Crane Electrical Maintenance
Feb 27-28	809	Overhead Crane Mechanical Maintenance
Mar 24	800	R1 Rigging Fundamentals, Inspections & Signals
Mar 24-25	800A	R2 Advanced Rigging & Rigging Inspection
Mar 24-26	800T	R3 Rigging T-T-T
May 27-29	819/819R	Overhead Crane Inspection
Jun 23-24	828	Mobile Crane Operator Safety & Inspection
Jun 25-26	829	Mobile Crane Operator Safety & Inspection
Jul 28	800	R1 Rigging Fundamentals, Inspections & Signals
Jul 28-29	800A	R2 Advanced Rigging & Rigging Inspection
Jul 28-30	800T	R3 Rigging T-T-T
Sep 22-24	819/819R	Overhead Crane Inspection
Oct 27-29	805	Overhead Crane Electrical Maintenance
Nov 17	800	R1 Rigging Fundamentals, Inspections & Signals
Nov 17-18	800A	R2 Advanced Rigging & Rigging Inspection
Nov 17-19	800T	R3 Rigging T-T-T
Dec 15-17	864	Konecranes VFD Crane Control

U.S. TRAINING CENTERS

NORTHEAST

CHARLOTTE, NORTH CAROLINA

DATES	CLASS	DESCRIPTION
Jan 28	800	R1 Rigging Fundamentals, Inspections & Signals
Jan 28-29	800A	R2 Advanced Rigging & Rigging Inspection
Jan 28-30	800T	R3 Rigging T-T-T
Feb 25-27	819/819R	Overhead Crane Inspection
Mar 24-26	864	Konecranes VFD Crane Control
Apr 28-29	807A	Overhead Crane Electrical Maintenance
Apr 30-May 1	809	Overhead Crane Mechanical Maintenance
May 19-21	819/819R	Overhead Crane Inspection
Jun 28	800	R1 Rigging Fundamentals, Inspections & Signals
Jun 28-29	800A	R2 Advanced Rigging & Rigging Inspection
Jun 28-30	800T	R3 Rigging T-T-T
Sep 1-3	819/819R	Overhead Crane Inspection
Sep 22-23	828	Mobile Crane Operator Safety & Inspection
Sep 24-25	829	Mobile Crane Operator Safety & Inspection
Oct 27	800	R1 Rigging Fundamentals, Inspections & Signals
Oct 27-28	800A	R2 Advanced Rigging & Rigging Inspection
Oct 27-29	800T	R3 Rigging T-T-T
Nov 17-18	807A	Overhead Crane Electrical Maintenance
Nov 19-20	809	Overhead Crane Mechanical Maintenance
Dec 15-17	819/819R	Overhead Crane Inspection

SAVANNAH, GEORGIA

DATES	CLASS	DESCRIPTION
Jan 14-15	807A	Overhead Crane Electrical Maintenance
Jan 16-17	809	Overhead Crane Mechanical Maintenance
Mar 10-12	819/819R	Overhead Crane Inspection
May 5	800	R1 Rigging Fundamentals, Inspections & Signals
May 5-6	800A	R2 Advanced Rigging & Rigging Inspection
May 5-7	800T	R3 Rigging T-T-T
Jul 7-9	819/819R	Overhead Crane Inspection
Aug 25-26	807A	Overhead Crane Electrical Maintenance
Aug 27-28	809	Overhead Crane Mechanical Maintenance
Nov 3	800	R1 Rigging Fundamentals, Inspections & Signals
Nov 3-4	800A	R2 Advanced Rigging & Rigging Inspection
Nov 3-5	800T	R3 Rigging T-T-T

MOBILE, ALABAMA

DATES	CLASS	DESCRIPTION
Jan 14-16	819/819R	Overhead Crane Inspection
Feb 18-20	808T/808TR	Overhead Crane Operator & Rigging T-T-T
Mar 17-18	828	Mobile Crane Operator Safety & Inspection
Mar 19-20	829	Mobile Crane Operator Safety & Inspection
Apr 21	800	R1 Rigging Fundamentals, Inspections & Signals
Apr 21-22	800A	R2 Advanced Rigging & Rigging Inspection
Apr 21-23	800T	R3 Rigging T-T-T
May 19-21	808T/808TR	Overhead Crane Operator & Rigging T-T-T
Jun 23-25	819/819R	Overhead Crane Inspection
Jul 21-24	IPAF	International Powered Access Federation
Aug 18	800	R1 Rigging Fundamentals, Inspections & Signals
Aug 18-19	800A	R2 Advanced Rigging & Rigging Inspection
Aug 18-20	800T	R3 Rigging T-T-T
Sep 15-17	808T-808TR	Overhead Crane Operator & Rigging T-T-T
Oct 20-22	819/819R	Overhead Crane Inspection
Dec 15	800	R1 Rigging Fundamentals, Inspections & Signals
Dec 15-16	800A	R2 Advanced Rigging & Rigging Inspection
Dec 15-17	800T	R3 Rigging T-T-T

"Enjoyed the class and really liked that the instructor could back up information with industry standards. Instructor was easy to listen to and kept conversation interesting."

COLE H., INTERNATIONAL PAPER

See Pages 7 & 8 for the
Konecranes Training Center
Milwaukee Schedule for
additional classes

LOS ANGELES, CALIFORNIA

DATES	CLASS	DESCRIPTION
Jan 7-9	819/819R	Overhead Crane Inspection
Feb 4-5	807A	Overhead Crane Electrical Maintenance
Feb 6-7	809	Overhead Crane Mechanical Maintenance
Mar 3	800	R1 Rigging Fundamentals, Inspections & Signals
Mar 3-4	800A	R2 Advanced Rigging & Rigging Inspection
Mar 3-5	800T	R3 Rigging T-T-T
Mar 6	FP8	Fall Protection Powered by LJB
Mar 31-Apr 2	808T/808TR	Overhead Crane Operator & Rigging T-T-T
May 5-7	819/819R	Overhead Crane Inspection
Jun 2-3	807A	Overhead Crane Electrical Maintenance
Jun 4-5	809	Overhead Crane Mechanical Maintenance
Jul 7	800	R1 Rigging Fundamentals, Inspections & Signals
Jul 7-8	800A	R2 Advanced Rigging & Rigging Inspection
Jul 7-9	800T	R3 Rigging T-T-T
Aug 4-6	808T/808TR	Overhead Crane Operator & Rigging T-T-T
Aug 25-27	FP24	Fall Protection Competent Person
Aug 28	FP8	Fall Protection Authorized Person
Sep 1-3	819/819R	Overhead Crane Inspection
Dec 1	800	R1 Rigging Fundamentals, Inspections & Signals
Dec 1-2	800A	R2 Advanced Rigging & Rigging Inspection
Dec 1-3	800T	R3 Rigging T-T-T

PHOENIX, ARIZONA

DATES	CLASS	DESCRIPTION
Jan 21-23	808T/808TR	Overhead Crane Operator & Rigging T-T-T
Mar 24-26	819/819R	Overhead Crane Inspection
Apr 28	800	R1 Rigging Fundamentals, Inspections & Signals
Apr 28-29	800A	R2 Advanced Rigging & Rigging Inspection
Apr 28-30	800T	R3 Rigging T-T-T
Jun 2-4	819/819R	Overhead Crane Inspection
Jul 28-30	808T/808TR	Overhead Crane Operator & Rigging T-T-T
Aug 25	800	R1 Rigging Fundamentals, Inspections & Signals
Aug 25-26	800A	R2 Advanced Rigging & Rigging Inspection
Aug 25-27	800T	R3 Rigging T-T-T
Oct 27-29	819/819R	Overhead Crane Inspection
Nov 17-18	828	Mobile Crane Operator Safety & Inspection
Nov 19-20	829	Mobile Crane Operator Safety & Inspection
Dec 15	800	R1 Rigging Fundamentals, Inspections & Signals
Dec 15-16	800A	R2 Advanced Rigging & Rigging Inspection
Dec 15-17	800T	R3 Rigging T-T-T
Dec 18	FP8	Fall Protection Authorized Person

HOUSTON, TX

DATES	CLASS	DESCRIPTION
Jan 7	800	R1 Rigging Fundamentals, Inspections & Signals
Jan 7-8	800A	R2 Advanced Rigging & Rigging Inspection
Jan 7-9	800T	R3 Rigging T-T-T
Feb 11-13	808T/808TR	Overhead Crane Operator & Rigging T-T-T
Apr 7-9	819/819R	Overhead Crane Inspection
May 12-14	FP24	Fall Protection Competent Person
May 15	FP8	Fall Protection Authorized Person
Jun 9-11	808T/808TR	Overhead Crane Operator & Rigging T-T-T
Jul 14-16	819/819R	Overhead Crane Inspection
Aug 11-12	828	Mobile Crane Operator Safety & Inspection
Aug 12-13	829	Mobile Crane Operator Safety & Inspection
Sep 9	800	R1 Rigging Fundamentals, Inspections & Signals
Sep 9-10	800A	R2 Advanced Rigging & Rigging Inspection
Sep 9-11	800T	R3 Rigging T-T-T
Oct 13-15	808T/808TR	Overhead Crane Operator & Rigging T-T-T
Nov 10-12	819/819R	Overhead Crane Inspection
Dec 8-9	807A	Overhead Crane Electrical Maintenance
Dec 10-11	809	Overhead Crane Mechanical Maintenance



U.S. TRAINING CENTERS

WESTERN

DETROIT, MICHIGAN

DATES	CLASS	DESCRIPTION
Jan 14	800	R1 Rigging Fundamentals, Inspections & Signals
Jan 14-15	800A	R2 Advanced Rigging & Rigging Inspection
Jan 14-16	800T	R3 Rigging T-T-T
Feb 11-13	808T/808TR	Overhead Crane Operator & Rigging T-T-T
Mar 10-12	819/819R	Overhead Crane Inspection
Apr 6	FP8	Fall Protection Authorized Person
Apr 7	800	R1 Rigging Fundamentals, Inspections & Signals
Apr 7-8	800A	R2 Advanced Rigging & Rigging Inspection
Apr 7-9	800T	R3 Rigging T-T-T
May 12-13	828	Mobile Crane Operator Safety & Inspection
May 14-15	829	Mobile Crane Operator Safety & Inspection
Jun 9-11	808T/808TR	Overhead Crane Operator & Rigging T-T-T
Jul 14-16	819/819R	Overhead Crane Inspection
Aug 11-14	IPAF	International Powered Access Federation
Sep 1	800	R1 Rigging Fundamentals, Inspections & Signals
Sep 1-2	800A	R2 Advanced Rigging & Rigging Inspection
Sep 1-3	800T	R3 Rigging T-T-T
Oct 13-15	808T/808TR	Overhead Crane Operator & Rigging T-T-T
Nov 10-12	819/819R	Overhead Crane Inspection
Dec 8-9	807A	Overhead Crane Electrical Maintenance
Dec 10-11	809	Overhead Crane Mechanical Maintenance

SPRINGFIELD, OHIO

DATES	CLASS	DESCRIPTION
Jan 21-23	808T/808TR	Overhead Crane Operator & Rigging T-T-T
Feb 18-20	819/819R	Overhead Crane Inspection
Mar 17	800	R1 Rigging Fundamentals, Inspections & Signals
Mar 17-18	800A	R2 Advanced Rigging & Rigging Inspection
Mar 17-19	800T	R3 Rigging T-T-T
Apr 14-16	864	Konecranes VFD Crane Control
May 19-21	819/819R	Overhead Crane Inspection
Jun 16	800	R1 Rigging Fundamentals, Inspections & Signals
Jun 16-17	800A	R2 Advanced Rigging & Rigging Inspection
Jun 16-18	800T	R3 Rigging T-T-T
Jul 21-23	808T/808TR	Overhead Crane Operator & Rigging T-T-T
Aug 18-20	864	Konecranes VFD Crane Control
Sep 15-17	819/819R	Overhead Crane Inspection
Oct 20-21	807A	Overhead Crane Electrical Maintenance
Oct 22-23	809	Overhead Crane Mechanical Maintenance
Nov 17-19	FP24	Fall Protection Competent Person
Nov 20	FP8	Fall Protection Authorized Person
Dec 15	800	R1 Rigging Fundamentals, Inspections & Signals
Dec 15-16	800A	R2 Advanced Rigging & Rigging Inspection
Dec 15-17	800T	R3 Rigging T-T-T

"Book was clear and easy to understand. Instructor very knowledgeable. Real life examples. Instructor made you comfortable in the classroom setting."

INGERSOLL RAND



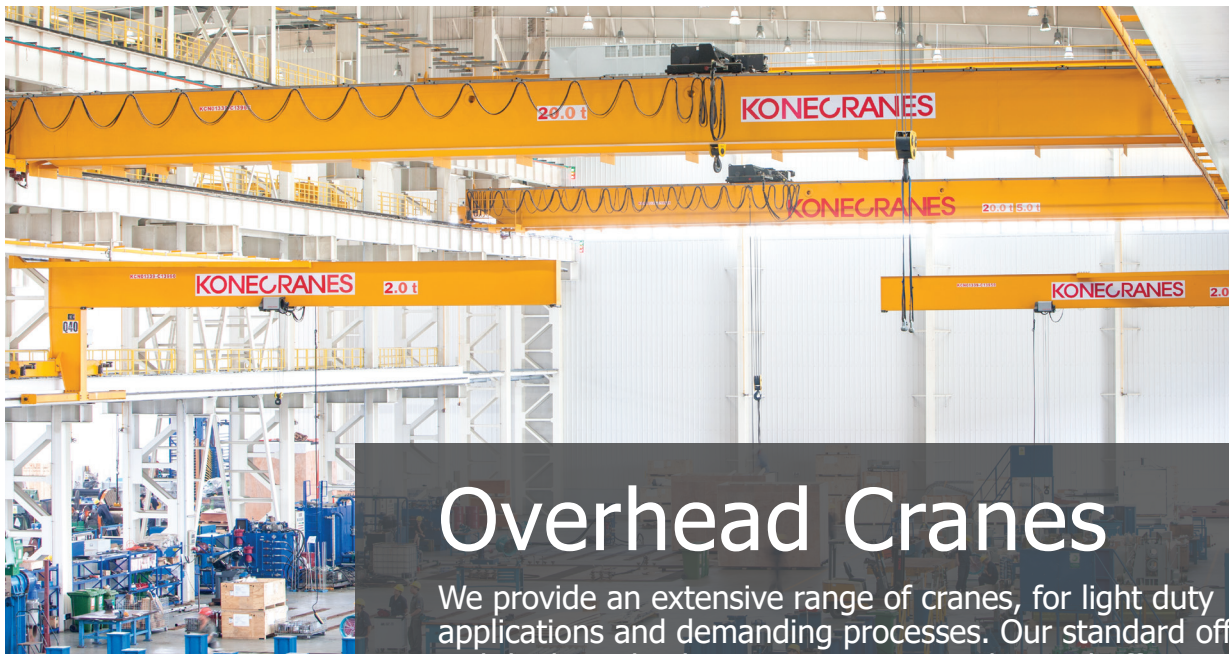
BURLINGTON, ONTARIO

DATES	CLASS	DESCRIPTION
Jan 14-16	819/819R	Overhead Crane Inspection
Feb 11-13	864	Konecranes VFD Crane Control
Mar 16-18	808T/808TR	Overhead Crane Operator & Rigging T-T-T
Apr 7	800	R1 Rigging Fundamentals, Inspections & Signals
Apr 7-8	800A	R2 Advanced Rigging & Rigging Inspection
Apr 7-9	800T	R3 Rigging T-T-T
May 12-13	807A	Overhead Crane Electrical Maintenance
May 14-15	809	Overhead Crane Mechanical Maintenance
Jun 2-4	819/819R	Overhead Crane Inspection
Jul 14	800	R1 Rigging Fundamentals, Inspections & Signals
Jul 14-15	800A	R2 Advanced Rigging & Rigging Inspection
Jul 14-16	800T	R3 Rigging T-T-T
Aug 18-20	808T/808TR	Overhead Crane Operator & Rigging T-T-T
Sep 15-17	819/819R	Overhead Crane Inspection
Oct 6-8	805	Overhead Crane Electrical Maintenance
Nov 10	800	R1 Rigging Fundamentals, Inspections & Signals
Nov 10-11	800A	R2 Advanced Rigging & Rigging Inspection
Nov 10-12	800T	R3 Rigging T-T-T
Dec 1-3	819/819R	Overhead Crane Inspection

EDMONTON, ALBERTA

DATES	CLASS	DESCRIPTION
Feb 25	800	R1 Rigging Fundamentals, Inspections & Signals
Feb 25-26	800A	R2 Advanced Rigging & Rigging Inspection
Feb 25-27	800T	R3 Rigging T-T-T
Apr 28-30	819/819R	Overhead Crane Inspection
Jun 23-24	807A	Overhead Crane Electrical Maintenance
Jun 25-26	809	Overhead Crane Mechanical Maintenance
Aug 25	800	R1 Rigging Fundamentals, Inspections & Signals
Aug 25-26	800A	R2 Advanced Rigging & Rigging Inspection
Aug 25-27	800T	R3 Rigging T-T-T
Oct 27-29	819/819R	Overhead Crane Inspection

Canadian classes will be taught to CSA standards as well as OSHA



Overhead Cranes

We provide an extensive range of cranes, for light duty applications and demanding processes. Our standard offering with high quality basic equipment or advanced offering with high-tech features is usually enough; but if it isn't, we can also provide a tailor-made solution for your processes.

Our Training Courses are applicable to all brands of Overhead Cranes and Hoists.



yourKONECRANES

Our customer portal, yourKONECRANES.com, gives you quick and easy access to your crane maintenance information. Usage data from TRUCONNECT and maintenance data and asset details from MAINMAN are linked, giving you a transparent view of events and activities over any selected time interval.

CRANE OPERATOR

OVERHEAD CRANE OPERATOR

#700 1 DAY | \$295

Hands-On
Training **DO YOUR OPERATORS KNOW:**

- Emergency Stop Signals
- How much weight they can safely lift with each crane in your plant?
- Shut down procedures?
- How to control load swing?

GENERAL DESCRIPTION

This course is geared for the crane operator and the supervisory personnel responsible for the daily operation and safe performance of cranes. The course covers major crane components, safe operating practices, daily checklists, communications, and operator inspections per OSHA, documentation requirements, and hands on demonstrations. Each participant will have the opportunity to perform an actual pre-operation inspection that is required by OSHA.

COURSE OBJECTIVES

- Identify and explain the function of all major crane components and assemblies
- Define the minimum qualifications and requirements of a crane operator
- Perform and document the daily crane inspection procedure required by OSHA
- Understand the four rules of safe and proficient crane operation
- Perform precise spotting of loads and make precision lifts
- Become familiar with the proper techniques to minimize load swing
- Explain and practice all recommended hand signals
- Understand the basic rigging procedures to attach a load to the hook
- Understand the requirements of crane operators per OSHA 1910.179

COURSE OUTLINE

- What is an Overhead Crane?
- Crane Operator Qualifications
- Know the cranes you operate
- Practical instruction at a crane; Conducting a daily operator inspection
- Safe and productive lifting techniques
- Safety – The Do's and Don'ts of Hoisting
- Crane Operating Hand Signals – ANSI Standards
- OSHA Safety requirements on handling loads – 1910.179
- Final Review

**2020 SCHEDULE****MILWAUKEE, WI**

- January 10
- February 21
- April 9
- May 8
- June 5
- September 11
- November 6
- December 18

COURSE DESCRIPTION	COURSE NO.	COURSE LENGTH	NO. OF STUDENTS	NOTES
General Crane Safety & Operation	700	4-8 hours	10-15	Hands-on included

Custom courses available specific to your equipment and your loads.

CRANE OPERATOR

OVERHEAD CRANE OPERATOR

Hands-On
Training

#808A FLOOR CRANE OPERATOR & RIGGING TRAINING | \$495

#808C CAB OPERATOR TRAINING | ONSITE PER REQUEST

#808R REFRESHER TRAINING | ONSITE PER REQUEST

DO YOUR OPERATORS KNOW:

- Emergency stop signals?
- How much weight they can safely lift with each crane in your plant?
- Emergency shutdown procedures for your cranes?
- How to perform OSHA required pre-operational inspections?
- Can you provide documentation showing the training program you provided to your operators?
- Do you have a refresher training program for your operators?
- Poorly trained operators could cause serious injury to your plant personnel, substantial damage to your equipment or the loads they carry. Your operators are required by OSHA to be qualified and trained to operate this equipment.

GENERAL DESCRIPTION

These courses are designed as a classroom and hands-on training program.

We offer several levels of training as seen in the chart below.

These courses cover all the OSHA/ASME requirements for overhead crane operation including the reasons behind the requirements. They begin with the fundamentals such as identification of major crane components and focuses on the safe and proper operation of the crane. Course lengths will vary depending on the specific type of tailoring to meet specific operations desired by the customer.

Seasoned and novice operators alike will benefit from information concerning basic crane construction, basic rigging, crane controls, controlling load swing, and pre-operational inspections.

COURSE OBJECTIVES

- Identify all major crane components
- Explain the function of major components
- Explain and use recommended hand signals
- Explain and apply all recommended safety procedures
- Perform all recommended operating procedures
- Correctly make precision lifts
- Understand crane control operations (AC or DC)

COURSE OUTLINE

- Major crane components
- Safety devices
- Recommended operating procedures
- Communications
- Safe operating practices
- Hands-on training and demonstrations



2020 SCHEDULE

#808A MILWAUKEE, WI

- January 17
- February 14
- May 15
- June 19
- July 17
- August 14
- September 25
- October 16
- November 13
- December 11

#808C

This course is offered on-site only. For more information or a quote, please call 866.821.4006.

#808R

This course is offered on-site only. For more information or a quote, please call 866.821.4006.

COURSE DESCRIPTION	COURSE NO.	COURSE LENGTH	NO. OF STUDENTS	NOTES
Floor Crane Operator & Rigging	808A	8-12 hours	10-15	Hands-on demo included
Cab Operator	808C	8 hours	8-12	Hands-on included
Refresher Training for Operators	808R	4-8 hours	10-15	Recommended every two years

Custom courses available specific to your equipment and your loads.

CRANE OPERATOR

OVERHEAD CRANE OPERATOR & RIGGING TRAIN-THE-TRAINER

#808T 3 DAYS | \$2,035

Do you have so many operators within your facility that having an outside contractor come in to conduct all the operator training would not be cost effective? Using an experienced operator to conduct training is a common practice in industry. Will that individual pass on any bad habits in the process?

This course will give the potential trainers not only the requisite information but also instructional skills for presenting information before groups of people.

GENERAL DESCRIPTION

This course will use either the Cab and Floor Crane Operator Course #808 or the Floor Crane Operator Course #808A as desired.

These courses cover all the OSHA/ASME requirements for overhead crane operation including the reasons behind the requirements. They begin with the fundamentals such as identification of major crane components and focuses on the safe and proper operation of the crane.

COURSE OBJECTIVES

- Identify all major crane components
- Explain the function of major components
- Explain and use recommended hand signals
- Explain and apply all recommended safety procedures
- Perform all recommended operating procedures
- Correctly make precision lifts
- Understand crane control operations (AC or DC)
- Hands-on training

COURSE OUTLINE

- Major crane components
- Safety devices
- Recommended operating procedures
- Communications
- Safe operating practices
- 20-minute training presentation

INSTRUCTORS KIT

You will receive the following:

- PowerPoint Presentation on Flash Drive including:
 - Written safety program for your Safety Manual
 - Instructors Manual with Course Outline
 - Example Final exam with answer key
- Hand Signal Poster
- Certificate of Training
- One student course kit (see below)

808T-K STUDENT KIT (INCLUDED)

12 Copies of the following:

- Course workbooks (for students)
- OSHA Overhead & Gantry Crane Regulation
- Rigging Handbook
- Hand Signal Card – Pocket Safety Tips
- Safety Recommendations (English & Spanish)

PRICE FOR ADDITIONAL STUDENT KIT

- 808T-K (12 Copies): \$395.00
- Sold only to Konecranes Trained instructors
- Best value for training your own operators!
- Order at www.cranetrainingu.com

MAXIMUM CLASS SIZE: 15

Hands-On
Training



2020 SCHEDULE

BURLINGTON, ON

- March 16-18
- August 18-20

DETROIT, MI

- February 11
- June 9-11
- October 13-15

HARTFORD, CT

- February 4-6
- June 2-4
- October 6-8

HOUSTON, TX

- February 11-13
- June 9-11
- October 13-15

MILWAUKEE, WI

- January 14-16
- February 11-13
- March 10-12
- April 7-9
- May 12-14
- June 16-18
- July 14-16
- August 11-13
- September 22-24
- October 13-15
- November 10-12
- December 8-10

LOS ANGELES, CA

- March 31-April 2
- August 4-6

MOBILE, AL

- February 18-20
- May 19-21
- September 15-17

PHILADELPHIA, PA

- January 15-16
- May 12-14
- November 10-12

PHOENIX, AZ

- January 21-23
- July 28-30

SPRINGFIELD, OH

- January 21-23
- July 21-23

CRANE OPERATOR

OVERHEAD CRANE OPERATOR & RIGGING TRAIN-THE-TRAINER, REFRESHER COURSE


 Hands-On
Training

#808TR 3 DAYS | \$1,225

#808TRA 2 DAYS | ONSITE PER REQUEST

GENERAL DESCRIPTION

This course is for Konecranes certified Instructors to renew their certification and Course Material licensing agreement.

#808TRA is 2 day accelerated program, per request only. #808TR is a 3 day program that enables students to stay current at a discounted rate. **If you take the 3 day course – you will be in class with new students.**

This course is a 2 day refresher course for previously certified operator trainers from Konecranes. This course will use either the Cab and Floor Crane Operator Course #808 or the Floor Crane Operator Course #808A as desired.

These courses cover all the OSHA/ASME requirements for overhead crane operation including the reasons behind the requirements. They begin with the fundamentals such as identification of major crane components and focuses on the safe and proper operation of the crane.

*PRE-REQUISITE: 808T, 808TR or 808TRA completed within the last 3 years.

COURSE OBJECTIVES

- Identify all major crane components
- Explain the function of major components
- Explain and use recommended hand signals
- Explain and apply all recommended safety procedures
- Perform all recommended operating procedures
- Correctly make precision lifts
- Understand crane control operations (AC or DC)
- Hands-on training

COURSE OUTLINE

- Major crane components
- Safety devices
- Recommended operating procedures
- Communications
- Safe operating practices
- 20-minute training presentation

INSTRUCTORS KIT

You will receive the following:

- PowerPoint Presentation on Flash Drive including:
 - Written Safety Program for your Safety Manual
 - Instructors Manual with Course Outline
 - Example Final exam with answer key
- Hand Signal Poster
- Certificate of Training
- One student course kit (see below)

808T-K STUDENT KIT (INCLUDED)

12 Copies of the following:

- Course workbooks (for students)
- OSHA Overhead & Gantry Crane Regulation
- Rigging Handbook
- Hand Signal Card – Pocket Safety Tips
- Safety Recommendations (English & Spanish)

PRICE FOR ADDITIONAL STUDENT KIT

- 808T-K (12 Copies): \$395.00
- Sold only to Konecranes Trained instructors
- Best value for training your own operators!
- Order at www.cranetrainingu.com

MAXIMUM CLASS SIZE: 15

2020 SCHEDULE

BURLINGTON, ON

- March 16-18
- August 18-20

DETROIT, MI

- February 11-13
- October 13-15

HARTFORD, CT

- February 4-6
- June 2-4
- October 6-8

HOUSTON, TX

- February 11-13
- October 13-15

MILWAUKEE, WI

- January 14-16
- February 11-13
- March 10-12
- May 12-14
- June 16-18
- July 14-16
- August 11-13
- September 22-24
- October 13-15
- November 10-12
- December 8-10

LOS ANGELES, CA

- March 31-April 2
- August 4-6

MOBILE, AL

- February 18-20
- May 19-21
- September 15-17

PHILADELPHIA, PA

- January 14-16
- May 12-14
- November 10-12

PHOENIX, AZ

- January 21-23
- July 28-30

SPRINGFIELD, OH

- January 21-23
- July 21-23

CRANE OPERATOR

BUCKET/GRAPPLE CRANE OPERATOR

#812 2 DAYS | HANDS-ON RECOMMENDED | CALL FOR PRICING

GENERAL DESCRIPTION

This course includes classroom and hands-on training for bucket crane operators. Major crane components, protective devices and safe operating procedures are covered in detail.

WHY SHOULD I ATTEND?

Companies who have taken this course in the past have benefited from decreased downtime, increased operator efficiency, longer wire rope life, longer bucket or grapple life and/or increased plant safety.

WHO SHOULD ATTEND

Petroleum coker facilities, waste-to-energy facilities, cement and aggregate plants.

COURSE OBJECTIVES

- Identify and explain the function of all major crane components
- Explain and apply all hand communication signals
- Explain the function of all safety devices
- Perform recommended operating procedures
- Explain and apply recommended safety precautions

COURSE OUTLINE

- Major crane components
- Safety devices
- Recommended operating procedures
- Communications
- Safe operating practices
- Hands-on training



2020 SCHEDULE

This course is offered on-site only. For more information or a quote, please call 866.821.4006.

CRANE OPERATOR

SMARTON OPERATOR

#SMOP 2 DAYS | \$1,095

GENERAL DESCRIPTION

This course is based upon Konecranes Smart Crane products, including the Smarton (SMT) series, and the CXT series cranes. This course will give students the opportunity to explore the intelligent lifting features, and how to best utilize them in your production environment. This course does expect the student to have a basic crane operator's skill, that will be built upon to gain new knowledge of the intelligent and safe lifting technologies.

WHO SHOULD ATTEND

This course is designed for the operators of Konecranes Smart Crane products. As well as facility and production managers where those cranes can maximize your productivity, or anyone looking to gain further knowledge about Konecranes Smart features.

Hands-On
Training

COURSE OUTLINE

- Sway Control
- Active Sway Control
- Inching
- Microspeed
- Shock Load Prevention
- Slack Rope Prevention
- Snag Prevention
- Hook Centering
- Assisted Load Turning
- Load Floating
- Follow Me
- Hoisting Synchronization
- Extended Speed Range/Adaptive Speed Range
- Target positioning
- End Positioning
- Working Limits
- Protected Areas



2020 SCHEDULE

MILWAUKEE, WI

- February 25-26
- June 9-10
- September 23-24
- December 14-15

Introducing the new Konecranes Rigging Seminar.

This 3 day seminar is designed to give you the level of rigging expertise you need to meet your job requirements.

Our **R1 #800 Rigging Fundamentals, Inspections & Signals** class is perfect for basic rigging training. **R2 #800A** will expand upon the R1 class to give you skills to meet more challenging situations, such as asymmetrical loads. Then, for those that need to be subject matter experts for your organization, the **R3 #800T Rigging Fundamentals Train-The-Trainer** course encompasses both the R1 and the R2 courses, as well as provides the skills you need to teach the fundamentals of rigging to others at your facility.

R1 RIGGING FUNDAMENTALS, INSPECTIONS & SIGNALS

#800 1 DAY | \$555

#800W* 1 DAY WEBINAR | \$595 | SEE PAGE 25

GENERAL DESCRIPTION

This course is designed for personnel who rig loads for lifting by cranes and for their supervisors. This course is most similar to a Rigger 1 course and provides the foundation for safe rigging practices.

Floor crane operators and others working with overhead cranes will benefit from this comprehensive Rigging Fundamentals course. Our instructor will be able answer your questions and cover important course material and concepts.

In addition to a course workbook participants will also receive a 4" x 5" pocket handbook which highlights good and bad rigging practices, sling capacities and how to calculate unknown loads.

COURSE OBJECTIVES

- Identify safe rigging practices
- Conduct prior to use inspections
- Understand basic rigging principles
- Load weight determination
- Turning loads

COURSE OUTLINE

Rigging Equipment

- Rigging Standards
- Risk Management
- The Basic Rigging Plan
- Rigging Terminology
- Good & Bad Rigging Practices

Slings & Inspections Criteria

- Wire Rope Slings
- Chain Slings
- Nylon Web Slings
- Metal Mesh Slings
- Endless Slings
- Eyebolts
- Shackles
- Hooks

Rigging Fundamentals

- Safe Rigging Practices
- Calculating Load Weight
- Rigging Calculations & Exercises
- Center of Gravity
- Turning Loads

*The #800W webinar cannot be substituted for the #800 live class when taking the full R1+R2+R3 rigging seminar.

R2 ADVANCED RIGGING & RIGGING INSPECTION

#800A 2 DAYS | \$1,075

GENERAL DESCRIPTION

This two-day course is for people with prior rigging experience. This course is most similar to a Rigger 2 course and continues focusing on safe rigging practices, lift planning and advanced rigging skills.

COURSE OUTLINE

- ASME B30 regulations and OSHA rigging standards.
- Inspection of Rigging Equipment
 - Inspection Records
 - Frequency
- Slings & BTH
 - Wire Rope Slings
 - Metal Mesh Slings
 - Synthetic Rope Slings
 - Synthetic Webbed Slings
 - Below the hook lifting devices
- Rigging Hardware
 - Eyebolts
 - Hoist Rings & Swivel Hoist Rings
 - Turnbuckles
 - Lifting Scales and Dynamometers
 - Snatch blocks
 - Plate Clamps
 - Manual lever operate hoists, and Hand Operated Hoists
 - Cribbing
- Lift plans based on student's actual environments.
- Advanced rigging calculations will include turning loads and center of gravity for irregular loads.

**We invite you to attend the course
which best meets your needs.
Come for one, two, or all three days!**



R3 RIGGING FUNDAMENTALS, INSPECTIONS & SIGNALS TRAIN-THE-TRAINER

#800T 3 DAYS | \$1,495

GENERAL DESCRIPTION

Do you have so many operators within your facility that having an outside contractor come in to conduct all the Rigging Training is not cost effective? Using an experienced person to conduct training is a common practice in industry. Will that individual pass on any bad habits in the process?

The Train-the-Trainer course is designed to provide your selected trainers with information required performing the necessary training of your operators and avoiding those bad habits. This two-day course will give the potential trainers not only the requisite information but also basic instructional skills for presenting information before groups of people.

The students will be required on the last day to make a presentation in front of the rest of the class. Time is allotted during the course for the individuals to make their "lesson plans" for use on the last day.

COURSE OUTLINE

- Rigging Fundamentals
- Advance Rigging Concepts
- Communications & Signaling
- Safe Practices
- Conduct a 10 to 15 minute training presentation

COURSE OBJECTIVES

- Explain and use recommended hand signals
- Explain and apply all recommended safety procedures
- Hands-on training
- Adult Learning and Instructing Concepts
- Presentation Skills

INSTRUCTOR KIT

You Will Receive the Following:

- One kit per student
- Presentation on Memory Stick
- Instructors Manual with Course Outline
- Example Final exam with answer key

STUDENT COURSE KITS

(INCLUDED) 800T-K which includes 12 Copies of the following:

- Course workbooks (for students) (Rigging Fundamentals)
- Rigging Handbook
- Hand Signal Card – Pocket Safety Tips

PRICE FOR ADDITIONAL STUDENT KIT

- 800T-K (12 Copies): \$315.00
- Sold only to Konecranes Training Institute Certified instructors.
- Order at www.cranetrainingu.com

CERTIFICATION PERIOD

The trainers who graduate will be certified for a two-year period. After two years we recommend refresher training.

See Page 23 for Course Schedule

Rigging Seminar Schedule

TRAINING CENTER	#800 R1 RIGGING FUNDAMENTALS	#800A R2 ADVANCED RIGGING & RIGGING	#800T R3 RIGGING TRAIN-THE-TRAINER
Burlington, ON	Apr 7	Apr 7-8	Apr 7-9
	Jul 14	Jul 14-15	Jul 14-16
	Nov 10	Nov 10-11	Nov 10-12
Charlotte, NC	Jan 28	Jan 28-29	Jan 28-30
	Jul 28	Jul 28-29	Jul 28-30
	Oct 27	Oct 27-28	Oct 27-29
Detroit, MI	Jan 14	Jan 14-15	Jan 14-16
	Apr 7	Apr 7-8	Apr 7-9
	Sep 1	Sep 1-2	Sep 1-3
Edmonton, AB	Feb 25	Feb 25-26	Feb 25-27
	Aug 25	Aug 25-26	Aug 25-27
Hartford, CT	Jan 7	Jan 7-8	Jan 7-9
	Mar 31	Mar 31-Apr 1	Mar 31-Apr 2
	Sep 1	Sep 1-2	Sep 1-3
Houston, TX	Jan 7	Jan 7-8	Jan 7-9
	Sep 9	Sep 9-10	Sep 9-11
Los Angeles, CA	Mar 3	Mar 3-4	Mar 3-5
	Jul 7	Jul 7-8	Jul 7-9
	Dec 1	Dec 1-2	Dec 1-3
Milwaukee, WI	Jan 7	Jan 7-8	Jan 7-9
	Feb 4	Feb 4-5	Feb 4-6
	Mar 3	Mar 3-4	Mar 3-5
	Mar 31	Mar 31-Apr 1	Mar 31-Apr 2
	May 5	May 5-6	May 5-7
	Jun 2	Jun 2-3	Jun 2-4
	Jul 7	Jul 7-8	Jul 7-9
	Aug 4	Aug 4-5	Aug 4-6
	Sep 1	Sep 1-2	Sep 1-3
	Oct 6	Oct 6-7	Oct 6-8
	Nov 3	Nov 3-4	Nov 3-5
	Dec 1	Dec 1-2	Dec 1-3
Mobile, AL	Apr 21	Apr 21-22	Apr 21-23
	Aug 18	Aug 18-19	Aug 18-20
	Dec 15	Dec 15-16	Dec 15-17
Philadelphia, PA	Apr 7	Apr 7-8	Apr 7-9
	Aug 11	Aug 11-12	Aug 12-13
	Dec 8	Dec 8-9	Dec 8-10
Phoenix, AZ	Mar 28	Mar 28-29	Mar 28-30
	Aug 25	Aug 25-26	Aug 25-27
	Dec 15	Dec 15-16	Dec 15-17
Pittsburgh, PA	Mar 24	Mar 24-25	Mar 24-26
	Jul 28	Jul 28-29	Jul 28-30
	Nov 17	Nov 17-18	Nov 18-19
Savannah, GA	May 5	May 5-6	May 5-7
	Nov 3	Nov 3-4	Nov 3-5
Springfield, OH	Mar 17	Mar 17-18	Mar 17-19
	Jun 16	Jun 16-17	Jun 16-18
	Dec 15	Dec 15-16	Dec 15-17

See Page 9 for
Regional Seminars

TRUCONNECT®

REMOTE MONITORING

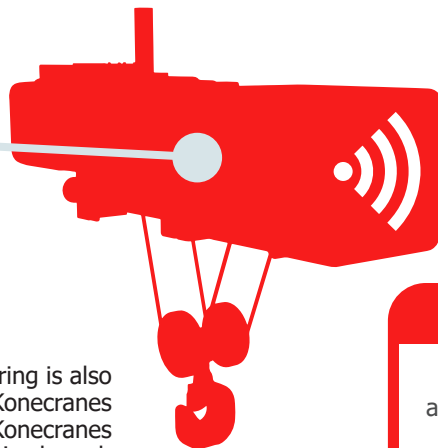


TRUCONNECT®

Remote Monitoring uses sensors to gather usage data:

- Running time
- Motor starts
- Work cycles
- Brake condition

TRUCONNECT Remote Monitoring is also available as a **RETROFIT** for Konecranes CXT® cranes. If you have non-Konecranes equipment, ask your local Service branch about potential upgrades.



OPERATING STATISTICS:

- Work cycles
- Running hours

DATA INSIGHTS:

- Track the design working period (DWP) of selected crane components
- Observe anomalies, patterns and trends to assist you with maintenance decisions

Text, or email, alert notifications play a key role in our **Lifecycle Care in Real Time** approach to crane maintenance.

SAFETY ALERTS:
Over-temperatures
Attempted overloads
Emergency stops

ACCESS CRANE MAINTENANCE DATA
WITH yourKONECRANES.COM

yourKONECRANES.com gives you quick and easy access to your crane maintenance information. Usage data from TRUCONNECT and maintenance data and asset details from MAINMAN are linked, giving you a transparent view of events and activities over any selected time interval. Aggregated data can be viewed, analyzed and shared quickly, for a single asset or an entire fleet.

Why wait for the next time you log into yourKONECRANES.com when you can be notified about each occurrence shortly after it happens? **?**

WEBINAR COURSES

LIVE ONLINE | INSTRUCTOR LED

These webinar courses are held in real time with the same teachers and quality instruction materials as our in-person classes. This format allows customers to reduce costs and the time it takes to travel for training.



RIGGING FUNDAMENTALS, INSPECTIONS & SIGNALS

#800W 1 DAY WEBINAR | \$595 | Course description on page 21

OVERHEAD CRANE INSPECTIONS

#819W 3 DAY WEBINAR | \$1,785 | Course description on page 27

FREQUENT CRANE INSPECTIONS

#819MW 1 DAY WEBINAR | \$595 | Course description on page 30

OVERHEAD CRANE INSPECTION REFRESHER

#820W 1 DAY WEBINAR | \$595 | Course description on page 28

CRANE REGULATIONS & RISK MANAGEMENT

#880W 1 DAY WEBINAR | \$595 | Course description on page 26

2020 SCHEDULE

Jan 30	#820W	Overhead Crane Inspection Refresher	Jun 5	#880W	Crane Regulations & Risk Management
Feb 3	#800W	Rigging Fundamentals, Inspections & Signals	Jun 25	#820W	Overhead Crane Inspection Refresher
Feb 4-6	#819W	Overhead Crane Inspections	Aug 6	#820W	Overhead Crane Inspection Refresher
Feb 7	#819MW	Frequent Crane Inspections	Aug 11-13	#819W	Overhead Crane Inspections
Feb 27	#820W	Overhead Crane Inspection Refresher	Aug 14	#880W	Crane Regulations & Risk Management
Mar 26	#820W	Overhead Crane Inspection Refresher	Oct 1	#820W	Overhead Crane Inspection Refresher
Apr 6	#819MW	Frequent Crane Inspections	Oct 19	#819MW	Frequent Crane Inspections
Apr 7-9	#819W	Overhead Crane Inspections	Oct 20-22	#819W	Overhead Crane Inspections
Apr 23	#820W	Overhead Crane Inspection Refresher	Oct 23	#800W	Rigging Fundamentals, Inspections & Signals
May 14	#820W	Overhead Crane Inspection Refresher	Oct 29	#820W	Overhead Crane Inspection Refresher
Jun 1	#800W	Rigging Fundamentals, Inspections & Signals	Nov 23-25	#819W	Overhead Crane Inspections
Jun 2-4	#819W	Overhead Crane Inspections			

Webinar students will receive a course workbook and other handouts via mail prior to the course. Internet and phone access are necessary.

CRANE MANAGEMENT

CRANE REGULATIONS & RISK MANAGEMENT

#880 1 DAY | \$595**#880W** 1 DAY WEBINAR | \$595 | SEE PAGE 25**GENERAL DESCRIPTION**

This course will give supervisors, plant managers, facility managers and safety managers information on OSHA and ASME B30 requirements for overhead crane operation including requirement reasons. Good management practices are discussed as well as some accident investigations.

COURSE OUTLINE

- Safety & Introductions
- Crane Incident Studies:
 - Review of Steel Mill Crane Safety Survey
 - Safety Triangles & OSHA Incident Report
 - KTI Overhead Crane Incident Study
 - Crane Standards & Training Requirements
- Rigging Safety - 5 Biggest Mistakes
- Crane Hand Signals & Communications
- Safety – Facility Manager Viewpoint
- Inspection Requirements
- Incident Investigation
- Critical Component Assessments
- Conclusions to Prevent Incidents
- Crane Safety – Action Plans

COURSE OBJECTIVES

- Identify applicable federal rules and regulations for material handling.
- Describe proper overhead crane use.
- Determine responsibilities of personnel associated with overhead cranes.
- Describe personnel/equipment liability.
- Identify rejection criteria for equipment
- List required inspections and frequency.
- Near miss and accident investigations.
- Discuss record keeping requirements.

2020 SCHEDULE**MILWAUKEE, WI**

- February 18
- May 27
- September 22
- November 25

"The instructor was very good at his job. I liked the information on regulations."

JAMES S., TURNER INDUSTRIES

CRANE INSPECTION

OVERHEAD CRANE INSPECTION

#818 4 DAYS | \$2,135

#819 3 DAYS | \$1,750

#819R 3 DAYS | \$1,050

#819W 3 DAYS | \$1,785 | SEE PAGE 25

Hands-On
Training



GENERAL DESCRIPTION

This popular course covers a wide variety of crane configurations. Participants receive a working knowledge of all pertinent regulatory agency requirements. Attendees may participate in an optional written evaluation following the seminar.

Those who successfully pass the evaluation will be issued a wallet-size crane inspection card, valid for two years. There is no additional charge for this testing.

#819R is a refresher for those who have completed the course in the past and wish to keep their Inspection Card current.

COURSE OBJECTIVES

- Perform inspections in accordance with all pertinent codes and regulations
- Understand and interpret applicable sections of OSHA Title 29 regulations (OSHA 29CFR)
- Have a working knowledge of ANSI/ASME Standard B30
- Recognize and perform required record keeping
- Be able to perform consistent, comprehensive crane inspections

COURSE OUTLINE

- Crane types and service classifications
- General inspection requirements
- General crane safety and housekeeping
- Hazards/shutdown conditions
- Runways, wheels, and brakes
- Crane structure and electrical systems
- Drive machinery and hoist equipment

WHO SHOULD ATTEND

Crane maintenance personnel, electricians, mechanics, millwrights, inspectors, maintenance supervisors, foremen, facilities engineers, or anyone else connected with your maintenance or safety program.

YOU WILL RECEIVE

- Course workbook
- Sheave Gauge
- Inspection Mirror
- OSHA 1910.179 Standards
- Safety Standards Reference Sheet
- Baseball Cap
- Inspection Card with Photo (Upon passing - Valid for two years)

MAXIMUM CLASS SIZE: 15

See Also Regional Seminar Schedule for more dates & locations, page 9

"The review of OSHA, ASME, CMAA requirements was extremely helpful. Great course. Wonderful, knowledgeable instructor and will highly recommend this course to others."

MICHAEL P., NUCOR STEEL

2020 SCHEDULE

#818

MILWAUKEE, WI

- January 21-24
- February 18-21
- April 14-17
- May 19-22
- July 21-24
- Aug 11-14
- Oct 20-23
- November 17-20

#819

BURLINGTON, ON

- January 14-16
- June 2-4
- September 15-17
- December 1-3

CHARLOTTE, NC

- February 25-27
- May 19-21
- September 1-3
- December 15-17

DETROIT, MI

- March 10-12
- July 14-16
- November 10-12

EDMONTON, AB

- April 28-30
- October 27-29

HARTFORD, CT

- March 3-5
- November 3-5

HOUSTON, TX

- April 7-9
- July 14-16
- November 10-12

MILWAUKEE, WI

- March 17-19
- June 16-18
- September 9-11
- December 15-17

LOS ANGELES, CA

- January 7-9
- May 5-7
- September 1-3

MOBILE, AL

- January 14-16
- June 23-25
- October 20-22

PHILADELPHIA, PA

- February 11-13
- June 9-11
- October 13-15

PHOENIX, AZ

- March 24-26
- June 2-4
- October 27-29

PITTSBURGH, PA

- January, 28-30
- May 27-29
- September 22-24

SAVANNAH, GA

- March 10-12
- July 7-9

SPRINGFIELD, OH

- Feb 18-20
- May 19-21
- September 15-17

CRANE INSPECTION

OVERHEAD CRANE INSPECTION REFRESHER

#820 1 DAY REFRESHER | \$625

#820SP ONLINE SELF-PACED | \$595

#820W LIVE WEBINAR | \$595 | SEE PAGE 25

GENERAL DESCRIPTION

- **820 ONE DAY:** This course is designed for past attendees whose crane inspection cards are at or near expiration. (Crane inspection cards are valid for two years after the date of issue.) Participants will discuss any regulatory agency requirement changes, record keeping and new or different inspection criteria/ techniques. A written evaluation will be administered and those passing will be issued a new card.

Attendees must bring course books provided at initial course.

- **820SP ONLINE:** We recently introduced our On-Line Overhead Crane Inspection Refresher Course.

This self-paced program allows students to cover the curriculum at their own pace and provides testing necessary to keep their Inspection Credentials up to date. Saving the cost and logistics of travel – many companies appreciate this option.

You can sign up on-line at:
www.cranetrainingu.com or
call us at: (866) 821-4006 for more
information.

COURSE OBJECTIVES

- Perform inspections in accordance with all pertinent codes and regulations
- Understand and interpret applicable sections of OSHA Title 29 regulations
- Working knowledge of ANSI/ASME Standard B30
- Recognize and perform record keeping
- Be able to perform consistent, comprehensive crane inspections

COURSE OUTLINE

- General inspection requirements
- General crane safety and housekeeping
- Hazards and shutdown conditions

MAXIMUM CLASS SIZE: 15

For larger groups, please
contact KTI for onsite
training options.



2020 SCHEDULE

MILWAUKEE, WI

- February 28
- April 6
- May 29
- September 25
- November 24

See Also Regional Seminar Schedule
for more dates & locations, page 9



Survey the alignment of your crane rails

Konecranes RailQ™ Runway Survey is an industry-leading rail analysis. It delivers accurate alignment information of your rail and expert recommendations for corrective action.

Konecranes RailQ Runway Survey uses a remotely operated robot combined with a visual inspection to provide you with an in-depth view of the alignment and condition of your crane rail. RailQ measurements include span, straightness, elevation and rail-to-rail elevation.

RailQ can be performed on virtually any runway including those for overhead cranes, port cranes and woodyard cranes.

CRANE INSPECTION

FREQUENT CRANE INSPECTIONS

#819M 1 DAY | \$595

#819MW LIVE WEBINAR | \$595 | SEE PAGE 25

GENERAL DESCRIPTION

This course encompasses the inspection criteria for all brands of Overhead Cranes and hoists. Maintenance and inspection staff will learn safety requirements and frequent inspection criteria in accordance with OSHA, ANSI/ASME and CMAA codes and regulations.

YOU'LL LEARN HOW TO:

- Reduce costly crane downtime
- Extend crane components life
- Lower overall maintenance costs
- Assure compliance with OSHA and ASME B30 standards

COURSE OBJECTIVES

- Perform frequent inspections in accordance with all pertinent codes and regulations
- Understand wire rope inspections and rejection criteria
- Understand and interpret applicable sections of OSHA Title 29 regulations (OSHA 29CFR)
- Have a working knowledge of ANSI/ASME Standard B30.2 and others
- Recognize and perform required record keeping.
- Be able to perform consistent, comprehensive Frequent crane inspections

MAXIMUM CLASS SIZE: 15



2020 SCHEDULE

MILWAUKEE, WI

- February 27
- May 28
- August 7
- November 23

“(What I liked most about this seminar was...) Seeing how the crane was made.”

NICK J., ACT FILM

CRANE MAINTENANCE

OVERHEAD CRANE MECHANICAL MAINTENANCE


 Hands-On
Training

#811 4 DAYS | HANDS-ON | \$2,135

#809 2 DAYS | \$1,300 | SEE PAGE 32 FOR DATES

**Electrical/Mechanical
Maintenance Seminar:
807 and/or 809
Take one or both!
See page 32 for dates**

GENERAL DESCRIPTION

This popular 2 or 4 day crane maintenance training course is a must for your Maintenance Department's Mechanical staff and provides standardized criteria to evaluate and correct structural, drive machinery and hoist problems on overhead cranes. Participants also learn how to setup comprehensive preventive maintenance programs. Students will work in our hands-on lab on actual crane and hoist components. A plant tour of a crane gearing and parts manufacturing plant is included.

WHO SHOULD ATTEND

Crane maintenance personnel, mechanics, millwrights, inspectors, maintenance supervisors, foremen, facilities engineers, or anyone else connected with your maintenance or safety program.

COURSE OBJECTIVES

- Learn to isolate causes of abnormal tracking
- Determine causes of abnormal component wear
- Learn component replacement criteria
- Learn replacement and adjustment procedures
- Determine needed preventive maintenance items and intervals

COURSE OUTLINE

- Introduction, Safety, Crane Terminology and Service Classes
- Crane Bridge Tracking
- Runways and Wheels
- Crane Structural
- Brakes - Load, Holding, Hydraulic and Disc
- Bridge and Trolley Drive Machinery
- Hoist Machinery - Gearing and Couplings
- Preventative Maintenance
- Appendix - Various Shoe Brakes

MAXIMUM CLASS SIZE: 15


2020 SCHEDULE

#811 MILWAUKEE, WI

- January 14-17
- February 25-28
- March 24-27
- April 21-24
- June 9-12
- July 7-10
- August 18-21
- September 15-18
- November 3-6
- December 1-4

"(What I liked most about the seminar was) having an instructor explain situations and components instead of a manual."

MARK G., HAMPTON NASA STEAM PLANT

CRANE MAINTENANCE

OVERHEAD CRANE ELECTRICAL MAINTENANCE


 Hands-On
Training

#805 3 DAYS | \$2,035

#807A 2 DAYS | \$1,300

GENERAL DESCRIPTION

This course highlights electrical maintenance procedures for all types of A.C. crane controls including A.C. full magnetic, stepless and adjustable frequency drives and is considered the basic orientation to electrical maintenance.

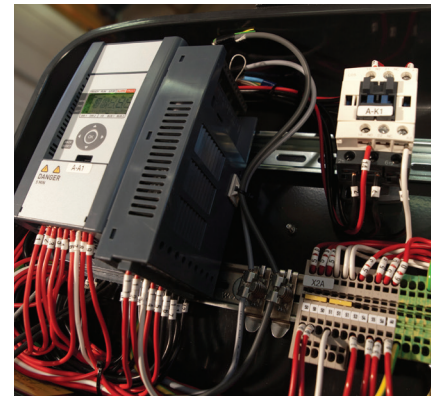
COURSE OBJECTIVES

- Identify the function and operation of single speed, two speed, step type, and adjustable frequency A.C. crane controls
- Analyze power and control circuits
- Identify problematic motor symptoms and correct their causes
- Perform control system inspections, tests and adjustments
- Analyze operating characteristics for troubleshooting control system failures
- Test, adjust and troubleshoot control components
- Recognize how the plugging, overload and travel limit protection circuits operate individually and in combination
- Perform brake electrical inspections, tests, adjustments and trouble shooting
- Perform electrical inspections
- Perform electrical preventive maintenance procedures

COURSE OUTLINE

- Overhead Crane Electrical Safety
- Overhead Crane Electrical Regulations
- Electrical Tools
- OHMS Law
- Motors
 - AC Motors
 - Wound Rotor Motors
 - DC Motors
 - Motor Maintenance & Troubleshooting
- Power Distribution
- Crane Electrical Components
 - Fuses & Circuit Breakers
 - Motor Overload
 - Contactors

- Mechanical & Electrical Interlocks
- Transformers & Rectifier
- Limit Switches
- Motor Thermistors
- Resistors
- Encoders
- Brakes & Electric Load Brake Magnetorque (TM)
- Master Controller, Radio Controls & Crane Pendants
- PLC & Crane Monitoring Equipment
- Crane Overload Limiter
- Variable Frequency Drives (VFD)
- Basic Speed Control
- Hands-On Student Labs
- Tour of motor manufacturing facility



2020 SCHEDULE

#805

BURLINGTON, ON

- October 6-8

HARTFORD, CT

- December 1-3

MILWAUKEE, WI

- January 7-9
- February 2-6
- March 17-19
- April 14-16
- June 2-4
- December 8-10

PITTSBURGH, PA

- October 27-29

**Electrical/Mechanical
Maintenance Seminar:
807 and/or 809
Take one or both!**

#807A + 809

BURLINGTON, ON

- 807A: May 12-13
- 809: May 14-15

CHARLOTTE, NC

- 807A: April 28-29
- 809: April 30-May 1
- 807A: November 17-18
- 809: November 19-20

DETROIT, MI

- 807A: December 8-9
- 809: Dec 10-11

EDMONTON, AB

- 807A: June 23-24
- 809: June 25-26

HOUSTON, TX

- 807A: December 8-9
- 809: December 10-11

MILWAUKEE, WI

- 807A: March 10-11
- 809: March 12-13
- 807A: June 23-24
- 809: June 25-26
- 807A: August 25-26
- 809: August 27-28
- 807A: October 27-28
- 809: October 29-30

LOS ANGELES, CA

- 807A: February 4-5
- 809: February 6-7
- 807A: June 2-3
- 809: June 4-5

PITTSBURGH, PA

- 807A: February 25-26
- 809: February, 27-28

SAVANNAH, GA

- 807A: January 14-15
- 809: January 16-17
- 807A: August 25-26
- 809: August 27-28

SPRINGFIELD, OH

- 807A: October 20-21
- 809: October 22-23

CRANE MAINTENANCE

UNDERHUNG CRANE MAINTENANCE

#816 3 DAYS | \$1,595

GENERAL DESCRIPTION

This course covers the mechanical and electrical maintenance aspects of packaged hoists. The program starts with the basics and progresses to the complete disassembly, reassembly and electrical troubleshooting of these hoists. The course is a combination of classroom and laboratory situations covering theory, operating characteristics, adjustments and troubleshooting.

COURSE OBJECTIVES

- Understand typical electrical and mechanical hoist systems
- Learn component inspection criteria
- Learn mechanical and electrical adjustments
- Perform assembly and disassembly procedures

COURSE OUTLINE

- Mechanical components of hoists
- Electrical components of hoists
- Balanced design Hevi-Lift hoists
- A Series Hevi-Lift hoists
- Beta Hevi-Lift hoists
- Hevi-Lift 300
- Zip-Lift wire rope hoists

MAXIMUM CLASS SIZE: 12Hands-On
Training**2020 SCHEDULE****MILWAUKEE, WI**

- March 4-6
- July 15-17
- September 2-4

CRANE INSPECTION COURSE

UNDERHUNG CRANE INSPECTION

#817 2 DAYS | \$1,235

GENERAL DESCRIPTION

This two-day course covers all pertinent regulatory agency requirements for the proper inspection of underhung cranes and hoists. Attendees may participate in an optional written evaluation following the course. Those who successfully pass the evaluation will be issued a wallet-size underhung crane inspection card, valid for two years. There is no additional charge for this testing.

COURSE OBJECTIVES

- Perform inspections in accordance with all pertinent codes and regulations
- Understand and interpret applicable sections of ASME regulations

- Have a working knowledge of ANSI/ASME Standard B30
- Recognize and perform record keeping
- Be able to perform consistent, comprehensive crane inspections

COURSE OUTLINE

- General inspection requirements
- Crane Components
- General crane safety and housekeeping
- Hazards and shutdown conditions

MAXIMUM CLASS SIZE: 15Hands-On
Training**2020 SCHEDULE****MILWAUKEE, WI**

- March 2-3
- July 13-14
- August 31 -September 1

CRANE CONTROL

KONECRANES VFD CRANE CONTROL

#864 3 DAYS | \$2,035

GENERAL DESCRIPTION

This state-of-the-art course covers P&H™ Smartorque Control and Drivecon Crane Control for vector drives. This course begins with the fundamentals of adjustable frequency drives, then educates participants on system specific details, such as closed loop hoist applications, open loop hoist applications and scalar drive traverse applications.

COURSE OBJECTIVES

- Understand crane and inverter safety considerations
- Learn the fundamentals of adjustable frequency drives
- Learn normal operating characteristics
- Learn drive programming procedures
- Interpret symptoms and learn to use test equipment in order to localize faults

COURSE OUTLINE

- Safety, protective features
- Theory of operation
- Squirrel cage motors
- Circuits and component layout
- Controls and operation
- Troubleshoot, Preventive Maintenance and Repair
- Review extensive software diagnostics
- Review extensive program parameters to include manual and auto-tuning
- Dynamic Braking theory and operation
- Extensive Hands-On Training

MAXIMUM CLASS SIZE: 10



2020 SCHEDULE

BURLINGTON, ON

- February 11-13

CHARLOTTE, NC

- March 24-26

MILWAUKEE, WI

- January 21-23
- July 28-30
- October 20-22

PITTSBURGH, PA

- December 15-17

SPRINGFIELD, OH

- April 14-16
- August 18-20

CRANE CONTROL

D.C. CRANE CONTROL

#852 3 DAYS | \$2,135

GENERAL DESCRIPTION

This course assists our customers by gaining the knowledge to keep their DC Crane Control Systems performing at peak levels. This course teaches the different methods of controlling D.C. motors as used on cranes. Block diagrams of various manufacturers' controls are utilized to explain the operation in a crane application. D.C. motor basics and preventive maintenance are also covered in detail. Additionally, the course covers proper preventive maintenance procedures and alignment for D.C. motor controls.

COURSE OBJECTIVES

- Understand D.C. characteristics, diode and SCR rectification
- Identify D.C. motor construction and perform maintenance
- Use system schematics to explain relay logic
- Properly text and adjust the electric control systems

- Troubleshoot the system to the faulty component

COURSE OUTLINE

- General & Electrical Safety
- Electrical Theory - Power Distribution
 - Ohm's Law & Kirchoff's Laws
 - Series and Parallel Circuits
- DC Motors
 - Motor Construction & Operation
 - Series Wound & Shunt Wound Motors
 - Inspection, Testing & Troubleshooting
- Brakes
 - Inspection & Adjustment
 - Brake Wheels
- Electrical Schematics & Diagrams
- Limit Switches & Motor control "power" circuits
- Acceleration controls circuits
- System testing and troubleshooting

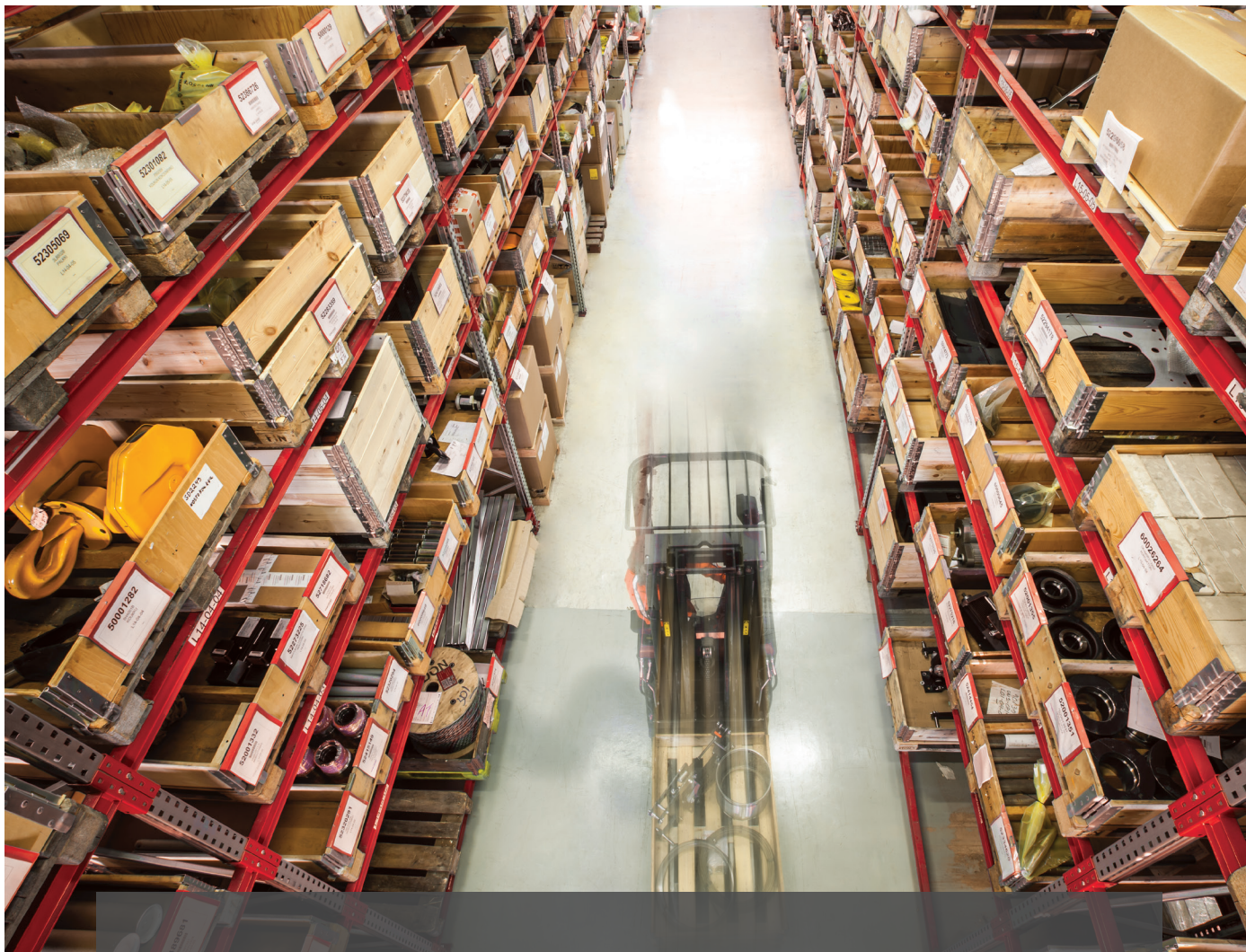
MAXIMUM CLASS SIZE: 10



2020 SCHEDULE

MILWAUKEE, WI

- Feb 11-13
- October 27-29



It doesn't matter who made your crane

When it comes to parts, service and training, it doesn't matter who made your crane. We offer genuine Konecranes spare parts as well as replacement parts for all other makes and models.

With almost a century of experience working on cranes and hoists of all types and makes, we have become a leading overhead crane maintenance supplier. Our service teams are trained to understand the unique requirements of each brand and provide professional service and training in accordance with manufacturers' recommendations and industry best practices.

CRANE PRO PARTS 800.727.8774 | www.craneproparts.com

CRANE CONTROL

STATIC STEPLESS SETUP AND TROUBLESHOOTING



#841 4.5 DAYS | \$3,125

#841CERT ADDITIONAL CERTIFICATION TESTING \$315

GENERAL DESCRIPTION

Static Stepless is a solid state, secondary reactor control system for overhead cranes. The course focuses on practical information for set-up, trouble shooting and component replacement on the control system. Course includes classroom and lab exercises to reinforce the lesson plan.

CERTIFICATION

Students can take a written and practical exam to earn a certification card on the last day for \$315 per student. Certification is valid for three years.

COURSE OBJECTIVES

- Understand the functions of all major system components
- Use schematic diagrams to analyze and troubleshoot the electrical system
- Understand the procedures used to test for proper operation
- Explain proper set up and adjustment procedures for the system

- Identify and correct motor problems
- Learn proper use of test equipment
- Trouble shoot hoist and traverse (bridge & trolley) controls systems
- Course Outline
- Introduction
- Safety
- Protective features
- A.C. to D.C. rectification
- Wound rotor motors and Magnetorque operation
- Magnetic amplifiers
- Modules and circuits
- Ancillary components
- Functional Tests
- Instrumentation
- Control Module Tests
- Resistance checks
- Voltage checks
- Tour of motor and Magnetorque manufacturing facility

MAXIMUM CLASS SIZE: 8

2020 SCHEDULE

MILWAUKEE, WI

- January 27-31
- April 27-May 1
- August 24-28
- November 9-13

CRANE CONTROL

IMPULSE SERIES VFD CONTROLS

#827 3 DAYS | \$2,035

BULLETINS 424V & 424S - CONFIRM YOUR CRANE'S BULLETIN NUMBERS PRIOR TO REGISTRATION

GENERAL DESCRIPTION

The Smartorque control is a state-of-the-art scaler and flux vector drive for overhead cranes. This course begins with the fundamentals of adjustable frequency drives, then educates participants on the system specific details. This course is a combination of classroom and laboratory work.

COURSE OBJECTIVES

- Understand crane and inverter safety considerations
- Learn the fundamentals of adjustable frequency drives
- Learn normal operating characteristics

- Learn drive programming procedures
- Interpret symptoms and learn to use test equipment to localize faults.

COURSE OUTLINE

- Theory of operation
- Safety, protective features
- Squirrel cage motors
- Circuits and component layout
- Controls and operation
- Troubleshooting and repair
- Review extensive software diagnostics
- Review extensive program parameters

MAXIMUM CLASS SIZE: 10

2020 SCHEDULE

MILWAUKEE, WI

- March 31-April 2
- September 29-October 1
- November 17-19

MOBILE CRANES

MOBILE CRANE OPERATOR SAFETY & INSPECTION

#828 2 DAYS | \$1,450

GENERAL DESCRIPTION

After completion, students will have an understanding of safe operating practices.

YOU WILL RECEIVE

- Load Charts
- Course Workbook

YOU WILL LEARN

- Lockout tag-out procedures and importance
- Block securing
- OSHA and ASME standards
- Load chart and load testing
- Safe Operating Practices
- Lift Planning
- Setting up the crane and cribbing
- Pre-operational inspections
- Basic Rigging procedures
- Weather conditions and how it affects operation
- Emergency response procedures
- Crane shutdown procedures
- Operators checklists
- CCO requirements will be discussed.

-PLUS-

Take #828 & #829 together for a bundled price of \$2,600

#829 2 DAYS | \$1,450

GENERAL DESCRIPTION

After completion, students will have an understanding of the requirements for Mobile Crane inspections, importance of inspections, and how to inspect mobile cranes safely. We cover meeting requirements of OSHA and ASME B30.5.

YOU WILL RECEIVE

- Course workbook
- Inspection forms for Mobile Cranes (paper and electronic copies)
- 2 Year Crane Inspection Certification

COURSE OUTLINE

- Inspection types and requirements
- Lockout tag-out procedures and importance
- OSHA and ASME standards
- Safe Operating Practices
- Inspection of crane components
- Nondestructive testing
- Crane Inspector qualifications
- Block securing
- Crane load testing and load chart
- Inspection Tools
- Basic Rigging
- Inspection Forms

Hands-On Training

MOBILE CRANES

MOBILE CRANE OPERATOR, "TRAIN-THE-TRAINER"

#828T 3 DAYS | \$1,750

GENERAL DESCRIPTION

The course must be completed after the Mobile Crane Operator course. This course will give potential trainers the requisite information and instructional skills for presenting to groups.

CERTIFICATION

Students will take a written and practical exam to earn a certification card, valid for two years. Certification students will need to submit details about their mobile crane experience.

COURSE OUTLINE

- Operation & Safety instruction practices
- Presentations
- Testing
- Instructor Kit included (PowerPoint, hand signal poster, sample test)
- Student kits can be purchased for additional fee

Hands-On Training

2020 SCHEDULE

CHARLOTTE, NC

#828: September 22-23
#829: September 24-25

DETROIT, MI

#828: May 12-13
#829: May 14-15

HARTFORD, CT

#828: August 4-5
#829: August 6-7

HOUSTON, TX

#828: August 11-12
#829: August 13-14

MILWAUKEE, WI

#828: April 28-29
#829: April 30-May 1

#828: July 21-22
#829: July 23-24

MOBILE, AL

#828: March 17-18
#829: March 19-20

PHILADELPHIA, PA

#828: February 10-11
#829: February 12-13

#828: September 15-16
#829: September 17-18

PHOENIX, AZ

#828: November 17-18
#829: November 19-20

PITTSBURGH, PA

#828: June 23-24
#829: June 25-26



2020 SCHEDULE

MILWAUKEE, WI

• May 19-21
• September 29-October 1

MOBILE CRANES

MOBILE CRANE OPERATOR, CERTIFICATION TRAINING & TESTING

#828-CCO 5 DAYS | ONSITE PER REQUEST

#828-CIC 5 DAYS | ONSITE PER REQUEST



GENERAL DESCRIPTION

We offer Mobile Crane Operator Certification Course for both experienced and inexperienced operators. After successful completion, students will be Certified Mobile Crane Operators. The three-day course preparation and training session is immediately followed by 1-2 days of testing for NCCCO certification for operators. CCO candidate fees are additional.

TRAINING REQUIREMENTS

- Cal OSHA Title 8 Section 5006.1 requires all mobile crane operators to be certified
- Other States requiring licensing - CA; CT; HI; MA; MN; MT; NV; NJ; NM; NY; OR; PA; RI; UT; & WV
- Cities that require licensing: Chicago, Los Angeles, New York
- Meets requirements of new OSHA 1926.1400 Subpart CC.



2020 SCHEDULE

This course is offered on-site only. For more information or a quote, please call 866.821.4006.

MOBILE CRANES

UTILITY TRUCK CRANE OPERATOR SAFETY

#828U ONSITE PER REQUEST

THIS TRAINING COURSE IS APPLICABLE TO ALL BRANDS OF UTILITY TRUCK CRANES

GENERAL DESCRIPTION

This one-day course covers safe operating practices for smaller truck-mounted cranes.

The course will cover:

- Safety
- Crane Components
- OSHA Regulations
- Operator requirements
- Proper Crane Setup
- Weather & outside conditions
- Pre-Operational Inspections
- Making Lifts
- Shut down & transit
- Testing requirements
- Hands-On Training



2020 SCHEDULE

This course is offered on-site only. For more information or a quote, please call 866.821.4006.

"I liked the instructors' knowledge and enthusiasm to teach what we need to know"

JUSTIN C., AUSTAL USA

PORTAL CRANE COURSE

PORTAL CRANE OPERATOR TRAINING

#838 3 DAYS | ONSITE PER REQUEST

GENERAL DESCRIPTION

This course includes classroom and hands-on training for new, and experienced, portal crane operators. Major crane components, protective devices and safe operating procedures are covered in detail.

COURSE OBJECTIVES

- Identify and explain the function of all major crane components
- Explain and apply all hand communication signals
- Explain the function of all safety devices
- Perform recommended operating procedures

- Explain and apply recommended safety precautions
- Discuss emergency shutdown and exit procedures

COURSE OUTLINE

- Major crane components
- Safety devices
- Recommended operating procedures
- Communications
- Safe operating practices
- Hands-on training
- Practice Emergency shutdown procedures



2020 SCHEDULE

This course is offered on-site only. For more information or a quote, please call 866.821.4006.

Watch for info on the Portal Crane Users Conference FALL 2020!

PORTAL CRANE COURSE

PORTAL CRANE MECHANICAL MAINTENANCE

#839 3 DAYS | ONSITE PER REQUEST

GENERAL DESCRIPTION

This course provides standardized criteria to evaluate and correct structural, drive machinery and hoist problems on portal cranes. Participants also learn how to set up comprehensive preventive maintenance programs. A plant tour of a crane gearing and parts manufacturing plant is included.

COURSE OBJECTIVES

- Learn to isolate causes of abnormal tracking.
- Determine causes of abnormal component wear.
- Learn component replacement criteria.
- Learn replacement and adjustment procedures.
- Determine needed preventative maintenance items and intervals.

COURSE OUTLINE

- Introduction – Safety,
 - Shut down Conditions
 - Service classifications & Type of Portal Cranes
 - Major Crane Components
- Crane Tracking
 - Results of Improper Tracking
 - Runway Tolerances
- Runways and wheels
 - Runway Alignment
 - Rail Systems & Rail Welding
 - End Stops
 - Wheel Features
 - Trolley Wheel Tracking
 - Wheel removal & Shimming Wheels
 - Equalizing & Truck Pins
- Crane Structure
 - Girders
 - Fixed Leg
 - Hinged Leg
 - Gantries
 - Gantry Equalizer Trucks
 - Trolley
 - Cab Supports
 - Trolley Wheel Replacement & Alignment

- Brakes
 - Mechanical Load Brakes
 - Electrical Load Brakes
 - Holding Brakes
- Gantry & Trolley Drives Systems
 - Gear Boxes
 - Gear Wear
 - Bearings
 - Couplings
- Hoist Machinery
 - Wire Ropes
 - Drums
 - Grapples
 - Reeving
- Preventative Maintenance
 - Lubrication Charts
 - Preventative Maintenance

Maximum Class Size: 15



The development of virtual reality (VR) from gaming to industrial use opens new possibilities for training.

As VR makes it possible to operate in lifelike situations, it simplifies complex processes and enables potentially hazardous situations to be simulated, eliminating the need of costly mockups and improving safety.

Operators can receive training in a fully immersive environment without the need for equipment.



Virtual Reality Simulators Available for:

- Overhead Cranes – Cab, Pendant or Radio
- Mobile Cranes

For pricing and availability, contact:

Konecranes Training Institute
866.821.4006 | Institute@konecranes.com

TRAIN YOUR PEOPLE FOR SAFETY AND COMPLIANCE

We are committed to helping you improve safety, productivity and return on investment over the entire life cycle of your operation. We do that by providing the best possible training anywhere. Overhead Crane Operators, Electrical and Mechanical Inspectors, Advanced Technical, Mobile Crane Operators and more.

Register online at cranetrainingu.com.



SAFETY TRAINING

FORK LIFT OPERATOR, "TRAIN-THE-TRAINER"

#920T 2 DAYS | ONSITE PER REQUEST

GENERAL DESCRIPTION

Many companies conduct their own forklift training courses for their personnel. This course will give potential trainers not only the requisite information but also instructional skills for presenting information before groups of people.

Students can take a written and practical exam to earn a certification card on the last day. Certification is valid for three years. Students for certification will need to have a good understanding of forklift operations and procedures as they pertain to their company. Forklift operating experience is required.

COURSE OBJECTIVES

- Discuss key safety issues for fork truck operators
- Discuss key instructor/facilitator ideas
- Review key industry standards

COURSE OUTLINE

- Introduction
- Safety
- Instructor Guide
- Fork Truck Safety
- Presentations
- Testing
- Each student will receive a flash drive with the Instructor Training Materials, including an Instructor PowerPoint



2020 SCHEDULE

This course is offered on-site only. For more information or a quote, please call 866.821.4006.

SAFETY TRAINING

MEWP OPERATOR TRAINING

#IPAF 1 DAY | \$495 | LIVE

Konecranes Training Institute is excited to announce its partnership with the International Powered Access Federation to provide the best worldwide recognized training in Mobile Elevated Work Platform (MEWP) Formally known as Aerial Work Platform (AWP) operation. The IPAF training program was developed by leading industry professionals and it meets or exceeds OSHA requirements and ANSI/CSA standards. It is certified by TÜV as conforming to the international standard ISO 18878 Mobile elevating work platforms – Operator (driver) training.

GENERAL DESCRIPTION

This one-day training will enable students to receive their PAL card. The PAL Card (Powered Access Licensed-Registration) is recognized worldwide across industries as proof of platform operator training to the highest standard. It is issued by the International Powered Access Federation (IPAF) to platform operators who successfully complete a

Hands-On Training



It is strongly recommended that students bring their own fall protection harness to use during this class.



training course at an IPAF-approved training center, and valid for 5 years. Konecranes training Institute will be offering training on type 3a (scissor lifts), and 3b (boom lifts) equipment. Please contact us regarding training on other types of equipment.

WHO SHOULD ATTEND

Overhead cranes and MEWPs often go hand in hand. Anyone that has the need to use a piece of equipment to work at height needs to have training. Additionally, according to ANSI A92.24, all managers of workers using MEWPs need to be trained as well.

Due to the limited class size IPAF standards dictate, your exact training date will be assigned to you during the 4-day training sessions we have listed based when reservations are made. Please contact us if you have any questions



2020 SCHEDULE

DETROIT, MI

- August 11-14

MILWAUKEE, WI

- April 21-24
- June 23-26
- August 18-21
- October 13-16

MOBILE, AL

- July 21-24

PHILADELPHIA, PA

- July 14-17

SAFETY TRAINING

MEWP FOR MANAGERS, E-LEARNING

#MEWP ONLINE COURSE FOR MANAGERS | \$100

GENERAL DESCRIPTION

MEWPs for Managers is aimed at those who plan, supervise or manage temporary work at height with Mobile Elevating Work Platforms (MEWPs), also known as Aerial Work Platforms (AWPs) and can assure compliance with new requirements for supervisor training in the new ANSI A92 suite of standards in the US. This self-paced online course will help you answer these questions:

- Do you know what your legal obligations are?
- Have you selected the right machine for the job at hand?
- Who is operating MEWPs on your site and have they been trained and familiarized?
- Have you considered the potential hazards and taken preventive measures?

WHO SHOULD ATTEND

Employers, project managers, foremen and supervisors working in a broad range of industries such as construction, facilities management, retail, airports, and arboriculture. Anyone who is responsible for planning and supervising the use of MEWPs on their job site.

QUALIFICATION

This course is about planning, supervising and managing the use of MEWPs, and not about operating equipment. It ends with a written test that candidates must pass. Upon successful completion of the theory test, candidates will receive an IPAF certificate. Those who hold a valid Powered Access License for operating equipment can have the MEWPs for Managers (MM) category added to their PAL Card.



2020 SCHEDULE

This course is offered only online. For more information, please call 866.821.4006.

SAFETY TRAINING

FALL PROTECTION AUTHORIZED PERSON

#FP8 1 DAY | \$600 | POWERED BY LJB INC.



GENERAL DESCRIPTION

This 1-day training is a must for anyone required to perform work at locations where they are exposed to fall hazards or use fall protection equipment.

This course, facilitated by fall protection experts from LJB Inc., covers the fall protection Authorized Person responsibilities defined in the ANSI/ASSP Z359.2-2017 standard. LJB does not manufacture, sell or distribute fall protection equipment, so our instruction provides unbiased information about the selection, use and limitations of equipment for hazard abatement.

CERTIFICATION

Students will complete exercises on hazard identification and control, as well as practice harness fitting and equipment use and inspection. Students will also complete a knowledge check to demonstrate understanding of the concepts introduced in the course. While only their employer may designate the student as an Authorized Person for their organization, students will be provided with a completion certificate and 0.8 continuing education units (CEUs).

COURSE OBJECTIVES

- Define the OSHA regulations and ANSI standards pertaining to fall protection
- List the elements of a managed fall protection program, as defined in ANSI/ASSP Z359.2-2017
- Recognize fall hazards
- Describe methods of fall hazard abatement, based on the hierarchy of controls
- Demonstrate the ability to properly use active fall protection systems
- Identify discrepancies in sample fall protection system equipment components
- Describe the importance of calculating the clearance required to prevent a worker from striking an object or the ground
- Find instructions contained within an active fall protection system use and rescue procedure

COURSE OUTLINE

- Managed Fall Protection
- Fall Hazard Recognition and Control
- Active Fall Protection System Equipment
- Fall Protection Equipment Inspection
- Fall Clearance Calculation
- System Use and Rescue Procedures

2020 SCHEDULE

BALTIMORE, MD

- July 17

CHICAGO, IL

- October 22

DENVER, CO

- February 21

DETROIT, MI

- April 6

HOUSTON, TX

- May 15

LOS ANGELES, CA

- March 6

MILWAUKEE, WI

- January 31

NASHVILLE, TN

- June 5

NEW YORK, NY

- October 16

PHOENIX, AZ

- December 18

PITTSBURGH, PA

- August 28

SPRINGFIELD, OH

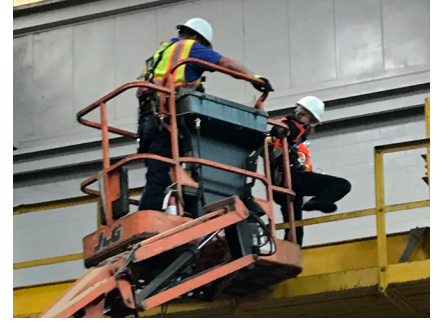
- November 20



SAFETY TRAINING

FALL PROTECTION COMPETENT PERSON

#FP24 3 DAYS | \$1,750 | POWERED BY LJB INC.



GENERAL DESCRIPTION

This 3-day training is a must for anyone responsible for the supervision of employees working at height and those charged with identifying, evaluating, and addressing potential fall hazards and taking prompt corrective action to address such hazards.

This course, facilitated by fall protection experts from LJB Inc., covers the fall protection Competent Person responsibilities defined in ANSI/ASSP Z359.2-2017. LJB does not manufacture, sell or distribute fall protection equipment, so our instruction provides unbiased information about the selection, use and limitations of equipment for hazard abatement.

CERTIFICATION

Students will complete exercises on the elements of a managed fall protection program, including hazard identification and control. In addition, students will practice harness fitting, equipment use and inspection, fall clearance calculation, and creation of use procedures. Students will also complete a knowledge check to demonstrate understanding of all concepts introduced in the course. While only their employer may designate the student as a Competent Person for their organization, students will be provided a completion certificate and 2.4 continuing education units (CEUs).

COURSE OBJECTIVES

- Define the OSHA regulations and ANSI standards pertaining to fall protection
- Identify the elements of a managed fall protection program, as defined in ANSI/ASSP Z359.2-2017
- Identify fall hazards, assess hazard risk, and prioritize the hazards for abatement
- Describe each of the major elements of an active fall protection system
- Identify fall protection anchorage requirements for given scenarios
- Demonstrate proper fit of a full-body harness
- Describe the use, restrictions, and limitations of connecting means
- Calculate the clearance required to prevent a worker from striking an object, or the ground
- Describe the importance of planning for prompt rescue when workers are using active fall protection systems

- Describe the use, restrictions, and limitations of some common rescue equipment
- Identify discrepancies in sample fall protection system equipment component(s)
- Create a written system use and rescue procedure that meets the standard defined in ANSI/ASSP Z359.2-2017
- Describe considerations when using horizontal lifelines, mobile elevated work platforms, and scaffolding

COURSE OUTLINE

- Managed Fall Protection
- Fall Hazard Survey
- Active Fall Protection System Equipment
- Fall Protection Equipment Inspection
- System Use and Rescue Procedures
- Horizontal Lifelines
- Mobile elevated work platforms (MEWPs)
- Scaffolding

2020 SCHEDULE

HOUSTON, TX

- May 12-14

MILWAUKEE, WI

- January 28-30

PITTSBURGH, PA

- August 25-28

SPRINGFIELD, OH

- November 17-19

"I've been in safety for more than 30 years and have never had a class on fall protection that was this good."

DEAN M. AMWAY CORPORATION

"This is my 4th Competent Person course. The new info learned and reinforcement of current knowledge was the best by far."

TONY K. TREMCO



Wire rope safety

During a typical inspection, only the outer wires and strands of the wire rope can be visually inspected. Konecranes RopeQ™ technology and non-destructive testing methodology analyzes the condition of the internal wires, strands and wire rope core that are not typically visible.

RopeQ is recommended for any wire rope application and is particularly useful in process cranes in constant use, cranes that are used only occasionally, ropes that are particularly hard to inspect visually and in post-accident inspections.

REGISTRATION FORM

SEMINARS INCLUDE ALL COURSE MATERIALS, LUNCH AND REFRESHMENTS. SEMINAR HOURS: 8AM - 4PM.

COURSE INFORMATION

COURSE LOCATION: _____ COURSE DATES: _____

STUDENT INFORMATION

NAME: _____ E-MAIL: _____ Class #'s: _____

NAME: _____ E-MAIL: _____ Class #'s: _____

NAME: _____ E-MAIL: _____ Class #'s: _____

NAME: _____ E-MAIL: _____ Class #'s: _____

NAME: _____ E-MAIL: _____ Class #'s: _____

AUTHORIZING PERSON/SUPERVISOR INFORMATION

NAME: _____ PHONE: _____

COMPANY: _____ CITY: _____

ADDRESS: _____ STATE/ZIP: _____

E-MAIL: _____

REGISTER

- INTERNET: www.cranetrainingu.com
- PHONE: 1.866.821.4006
- E-MAIL: institute@konecranes.com
- CONTACT your local Konecranes branch or representative
- MAIL this form to:
Konecranes Training Institute
5306 S. Emmer Drive
New Berlin, WI 53151

PAYMENT INFORMATION

☐ VISA ☐ MASTERCARD ☐ AMERICAN EXPRESS

NAME ON CARD: _____

CARD NUMBER: _____

EXPIRATION DATE: _____ AMOUNT: _____

BILLING ADDRESS: _____

SIGNATURE: _____

Contact the Konecranes Training Institute, if using checks, P.O. numbers, or any other form of payment.

Providing training on ALL BRANDS of
cranes and hoists including the
KONECRANES® family of brands



DWIGHT FOOTE™

KAVERIT
CRANES & SERVICE®



F.T. Crowe & Company™



MORRIS
MATERIAL HANDLING®
OEM of P&H Crane & Hoist Parts



NORTHERN



PROVINCIAL
CRANES



Konecranes Training Institute

5306 S. Emmer Drive
New Berlin, WI 53151
P 866.821.4006

cranetrainingu.com | konecranesUSA.com | konecranes.ca

